

## APOGEE 12

Innovate. Interact. Optimize.

Apogee is a comprehensive and integrated workflow solution enabling you to control every phase of the printing production process from a single user interface.





# APOGEE 12

Organizations of every size and type can benefit from the Apogee Suite of workflow management products. With Apogee, Agfa offers **a comprehensive and integrated prepress workflow solution**, committed to offering the highest degree of reliability.



The Apogee workflow software enables commercial printers to manage all possible production output from a single user interface. As such, it perfectly aligns and fuses different software modules into one streamlined whole. But there's more. The latest version of Apogee—Apogee 12—brings new tools such as multi-product imposition, an improved performance, and additional automation features.

## The Apogee philosophy

### Innovate

Innovation starts with questioning the status quo. How can I simplify my workflow? Improve productivity? Reach new markets? Apogee has the answers. With its range of innovative tools, Apogee lets you **work both intelligently and efficiently**, and serve your customers on a higher level than ever before. Innovation requires audacity.

### Interact

The internet has made people accustomed to doing everything online. To having everything available immediately, day and night, regardless. Print buyers are no exception. Yet how you interact with customers is paramount. With Apogee, it means allowing them to **view, update, and approve** their projects from their mobile devices, for example. Or offering them products through an intuitive online store. In any case, Apogee enables you to interact with your clients and provide them with a rich experience that generates loyalty.



### Optimize

Optimization results in higher profitability, greater efficiency, and less waste. It is the driving force behind your entire operation. Apogee optimizes **every aspect of your production process**, from customer collaboration, through prepress workflows, all the way to the finished product. **Reducing the complexity** of workflows and **automating** time-consuming tasks is what Apogee continuously strives for. With Apogee, optimization means increased press efficiency, added features, and more flexibility.



# What's new in Apogee 12?

## Production efficiency and order combination

How orders get printed and finished, is what drives production cost. That's why Agfa keeps on improving its award-winning solution **Apogee Impose**. In v12, a major change for sheetfed printers is the support for "cut & assemble" production jobs. The automatic placement of two or more fold sheets on a single press sheet is now embedded in the Impose intelligence module. By combining fold sheets, finishing will be more efficient, saving you time and money.

For web printers, Apogee v12 has a lot in store too: support for bottling, the combination of several page modifiers (shingling, page offsets...) and enhanced web growth compensation, are just a few examples of how Apogee Impose improves the final print product quality. On top of that, handling partial webs is now automated, including the adjustment of marks.

Last but not least, printer's feedback inspired us to make our customers' lives easier by automatically creating a personalized imposition report of each job, which can be added to the job bag for use by the press and finishing equipment. In addition, Apogee v12 offers the ability to re-use complex imposition setups in an easy way, saving operators a lot of time!

## Monitoring job status and quality

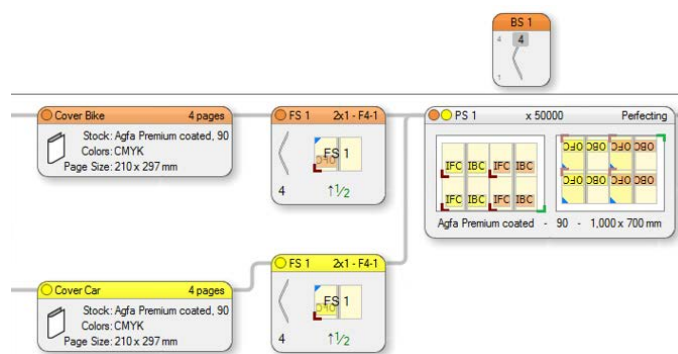
**Apogee WebFlow** is a new module to give customer service representatives, press and finishing operators or others within a printing company access to job data. It makes it easy to check the status of jobs, visualize page content and check which signatures are ready for output. On top of that, WebFlow is integrated with Agfa's ECO<sup>3</sup> software solution **PressTune**, which displays the print quality scores detailing how the actual print sheets compare to the set standard for each job and signature. This saves CSR's time when reviewing the quality of their customers' orders.

## Up-to-date with the latest technology

Innovation is the driving force within Agfa. More than 20 years ago, Apogee Series 1 was the first workflow to use PDF as a production file format. The latest Apogee generation continues to take the lead in prepress workflow solutions, which is also why the latest available

technology from its key partners Microsoft and Adobe are integrated.

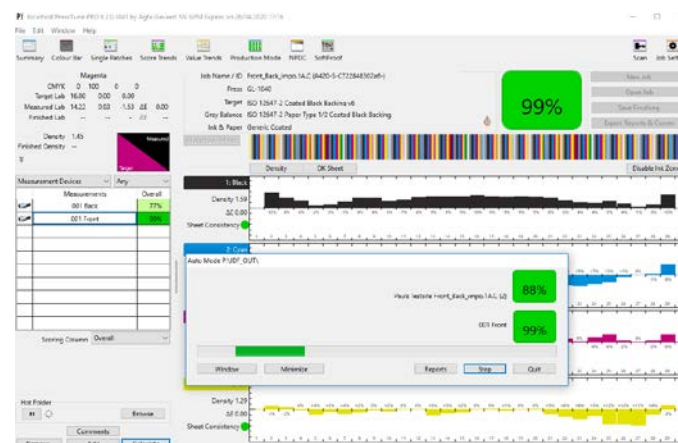
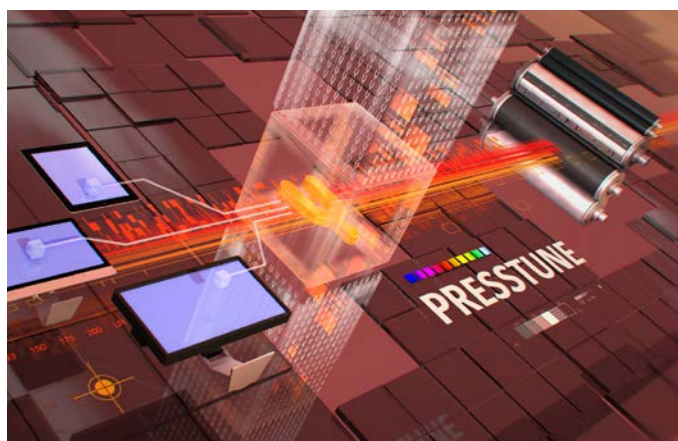
Apogee v12 includes the latest **Adobe PDF Print Engine 5.4** to prepare printers for full compatibility for the new PDF 2.0 standard and to output designs correctly.



## ATP or Automate Task Processor

Accessible automation is part of the Apogee DNA: The user interface offers multiple ways to automate standard and repetitive tasks such as job archival and deletion. You can also effortlessly set up page placement rules according to naming conventions. In Apogee v12, automation is lifted to the next level with ATP or Automate Task Processor. Using an interface, rules are defined to take action depending on a page's content or meta data. This means that pages and orders can be routed to specific production plans. In case of a high copy count, an order is sent to your offset press. A digital job may be split between your B&W and color digital presses to guarantee the lowest possible production cost.

ATP is not limited to the rules set in the interface. If dedicated actions need to be taken, specific scripts can be written and added. This leads to the highest possible degree of automation of your prepress production.





# Apogee Cloud



Apogee Cloud is all about using the existing Apogee 12 modules, yet relying on the infrastructure, know-how, and hardware security offered by Agfa. The solution is aligned with your production requirements and includes hardware, software, support, and ICT-managed services. Apogee Cloud minimizes your investments, yet maximizes flexibility. Need more production capacity? This cloud-based solution is perfectly adaptable to your changing needs. In any case, your software is always up to date.

## Managed and hosted by Agfa

No one knows Apogee better than we do. With Apogee Cloud, Agfa experts not only relieve in-house IT personnel of day-to-day tasks, thus affording them more time to focus on strategy and innovation. They also ensure system stability. By constantly and proactively monitoring processes, they foresee and prevent system failures or downtime.

Apogee Cloud relies on the same hosting technology as we use for our customers in the healthcare industry, which means that your data is 100% secure. Agfa's hosting service is located in two physically separate data centers in Mortsels (Belgium), which are monitored 24/7 and accessible by authorized personnel only. The infrastructure also guarantees protection against fire and water damage. The data centers are ISO 9001 and ISO 27001 certified.

## Apogee Cloud benefits:

- Enables you to run your workflow off-site, without the necessity of local configuration, software installations or hardware expertise.
- Allows you to use professional infrastructure that offers database security, redundancy, as well as system stability and business continuity.
- Provides you with an easy way to network and interact with print buyers, different production plants, and employees.
- Centralizes the control over different print sites and production facilities, which results in a more efficient production process.

# Apogee as a unique production hub

## Apogee driving digital commercial presses

Integration between Apogee Prepress and a digital front-end/a digital offset press is accomplished through CIP4's Digital Print ICS compliant JDF/JMF. Once integrated, Apogee Prepress becomes the facilitator and single point of workflow control in this "hybrid" workflow setup. It will manage the creation of proofs, plates and the digital print-ready files. Depending on the requirements, the digital print-ready file can be either a "vector PDF" or a "raster PDF". The type of digital press and its configuration will also determine what digital press-specific parameters Apogee Prepress can set, such as the paper type and size, screening and finishing parameters, and more. The status of the print job is reported back to Apogee Prepress and can be tracked through its graphically rich user interface.



## Apogee managing output on large-format inkjet devices

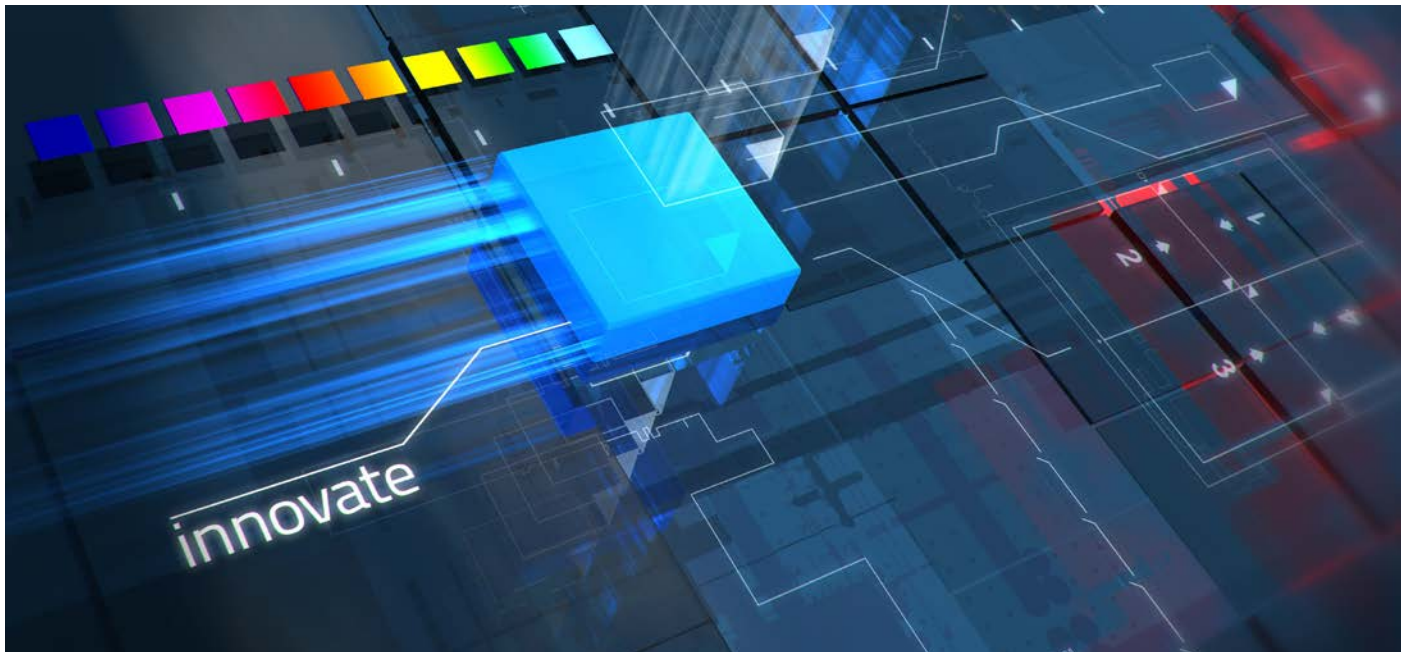
Apogee is a more advanced production hub than all other workflow solutions. Dedicated application tools, e.g. for tiling or image manipulation allow printers to prepare and create print-ready files for sign & display output to both Agfa and non-Agfa inkjet devices. The result is one single workflow, managed by one prepress department, to preflight, prepare and manage production independent of substrate or output device.

# Apogee Impose



Do not let your prepress department be limited by templates. Feed Apogee Impose with data such as sheet size, number of pages and available equipment and it will calculate smart impositions. Thanks to the full integration with Apogee, the imposition schemes get updated automatically when you change parameters as the job progresses. This minimizes errors, speeds up your prepress and reduces paper waste or the number of printing plates.

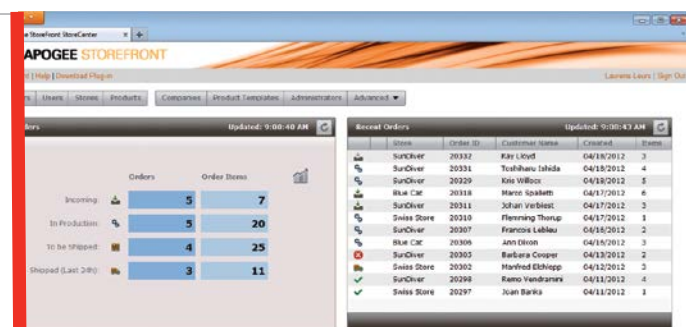
Apogee Impose comes in two flavors: one tuned to sheetfed printing, the other to web offset, taking all kinds of finishing parameters into account as well.



# StoreFront



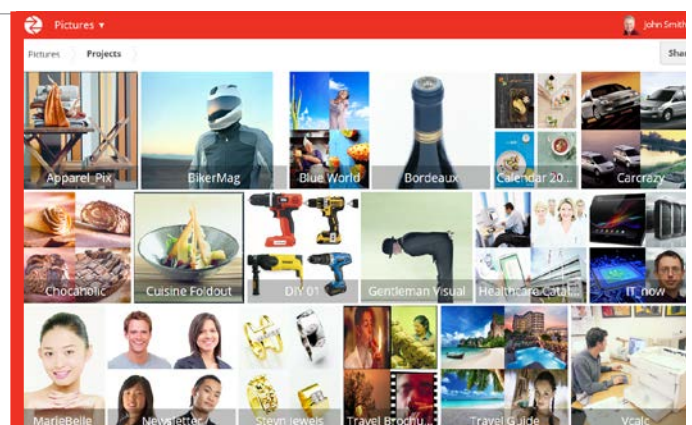
StoreFront is a cloud-based, web-to-print solution that enables printers and print service providers to efficiently market their services. It helps you generate revenue by creating online stores—both public or private (B2B)—from which you can offer print and non-print products.



# PrintSphere



Tired of exchanging data through a variety of tools? Meet PrintSphere, a cloud-based service that makes it easy to store and access data online. It provides a standardized way for print service providers to share files, automate their workflows, and facilitate data exchange with other Agfa service solutions.





# Apogee WebApproval



Expanding your Apogee workflow system with a web portal for online collaboration, Apogee WebApproval enables both your clients and your colleagues to access jobs from their desktop computer or mobile device. They can cooperate with each other, upload files, review pages, and approve jobs. Thanks to WebApproval, you can facilitate file exchange and shorten approval cycles, which results in fewer errors and more satisfied customers.

## 24/7 portal for reliable soft proofing

Apogee WebApproval is available 24/7 and from any place that offers internet access. Users can access the secure, password-protected portal from any HTML5-based browser to view their own jobs, exchange data, and soft proof files. Customers, approvers, and managers can view and approve print-ready pages that show the exact print output, thus minimizing the risk of mistakes or costly reprints.

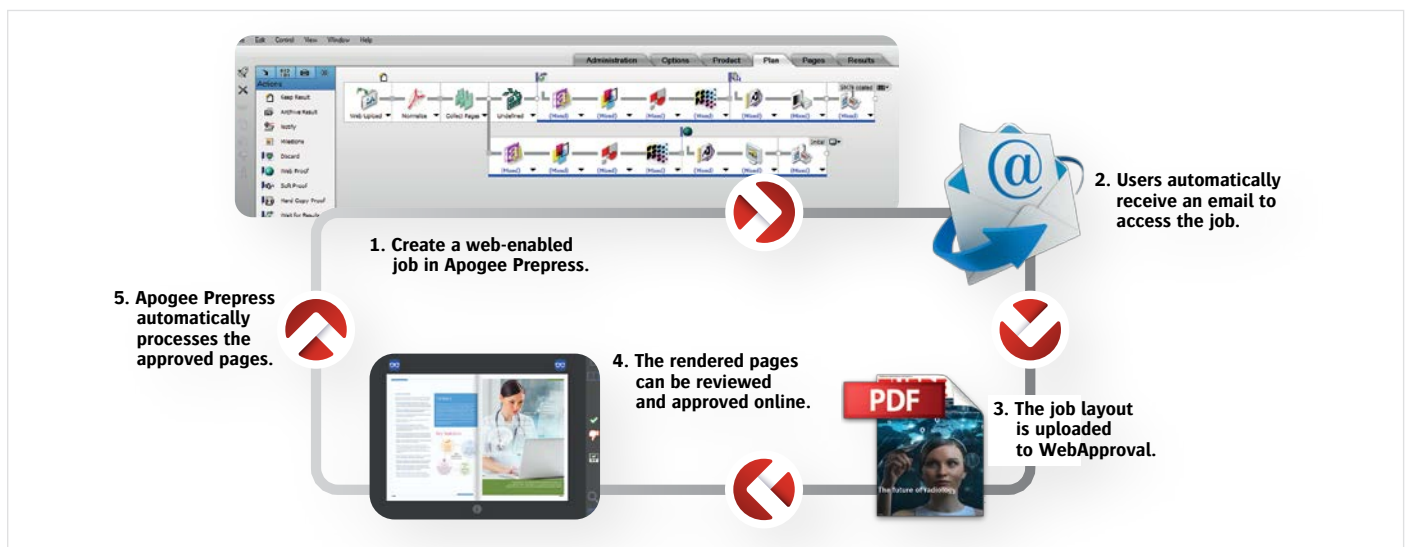
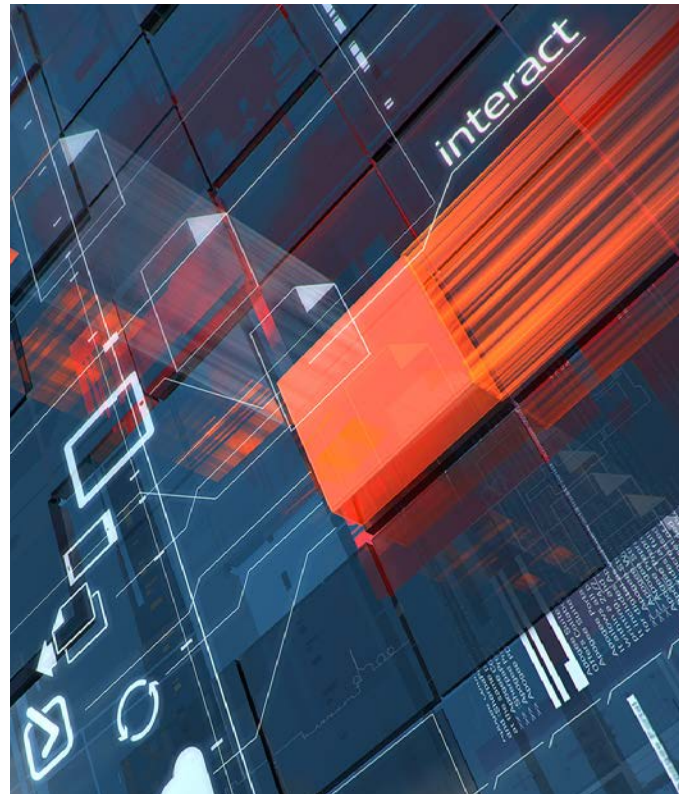
## WebApproval 12: even better than before

The multi-tenant support is a perfect fit for a lot of customers today. When printing for different print brokers or after consolidation, it can be important to maintain brand identity and company name for a specific set of print buyers. This is what multi-tenant is all about: Creating a dedicated environment for print buyers to retain customer loyalty.

Error handling has that aim too. Depending on the skill level of the print buyer or approver, different views or actions can be enabled. As an example, a preflight error can be an absolute blocking factor for approval for a certain print buyer. Or it can be overruled if the approver is knowledgeable enough. This user management setup allows printers to create an environment that is perfectly tuned to their customers' skills.

As the amount of variations and versions of printed matter increases, tools need to offer visual control mechanisms to avoid expensive (print) mistakes. Apogee WebApproval v12 now can highlight the difference between the various versions of a magazine or flyer. This makes the approval significantly easier and reduces the time a print buyer spends to approve these versioning orders.

To support printers, all actions taken in Apogee WebApproval are accessible in an interface. In case of a dispute with the print buyer, the log shows who logged in, viewed which page, what preflight messages were sent, who approved... This detailed log can be filtered to find specific information and can be exported for archival use.



# CristalRaster III

The third-gen FM screen the printing industry has been waiting for



CristalRaster III introduces the 3rd generation of FM screening technology, combining the best aspects of the 1st and 2nd generation as well as all assets of Agfa's Sublima software. The result is the best FM screen on the market, guaranteeing longer run lengths, astounding image quality and excellent printing stability. With CristalRaster III, your prints will be more beautiful, quicker to produce and more consistent than ever before.



Connecting the FM dots leads to less dot circumference, and thus to easier printing conditions

## The key benefits

CristalRaster III comes with several quality benefits, including:

- Picture-perfect reproduction thanks to finely rendered details and support for 4+ color printing
- Crystal-clear quality: no moiré, no unwanted angles, no rosette structures
- Better printing stability compared to alternative FM screening technologies
- Improved run lengths



More details in very light as well as in dark tones with CristalRaster III



CristalRaster III limits subject moiré or pattern interference.

## Agfa's ECO<sup>3</sup> program



Agfa is committed to sustainable innovation that focuses on ecology, economy, and extra convenience—or ECO<sup>3</sup>. Our hardware, software and consumables make your prepress and printing operations cleaner, more cost-effective and easier to operate and maintain. Thanks to ECO<sup>3</sup>, you can save up to 30% on ink and paper, 90% on water, and reduce waste by 50%. In sum, they bring more value to your entire printing business.

## PARTNERS



## APOGEE NETWORK



Apogee Network is a community of Apogee users, specially developed to help you get the most out of your Apogee investment.

Check it out on <https://apogee.agfa.net/>.