

A SYNERGY
BETWEEN
LEATHER & INK



ALUSSA eTU 25

Optimized patented decoration process
for genuine leather

Alussa is a tailor-made UV inkjet solution for the leather industry, perfect for integration in tanneries and printing companies. Featuring a transport mechanism optimized for leather transport, it achieves production speeds of up to 100 m²/h.

THINK **AGFA** 

Key benefits

1

Heavy-duty robustness

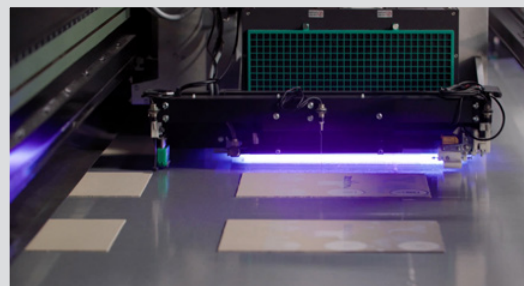
- Built for 24/7 operations
- Full continuous mode: Asanti workflow software, use of pedals to maximize user-friendliness



2

LED UV curing

- No warm-up time needed of the lamps and thus high productivity
- A 10,000-hour lifetime with a consistent UV output throughout, resulting in consistent ink curing, performance & image quality
- Low energy consumption



3

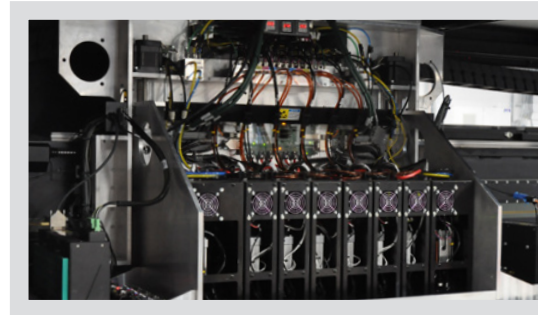
Patented twin belt system with vacuum

- Good grip on leather
- Accurate media transport & precise dot positioning results in very sharp images

4

State-of-the-art print head shuttle

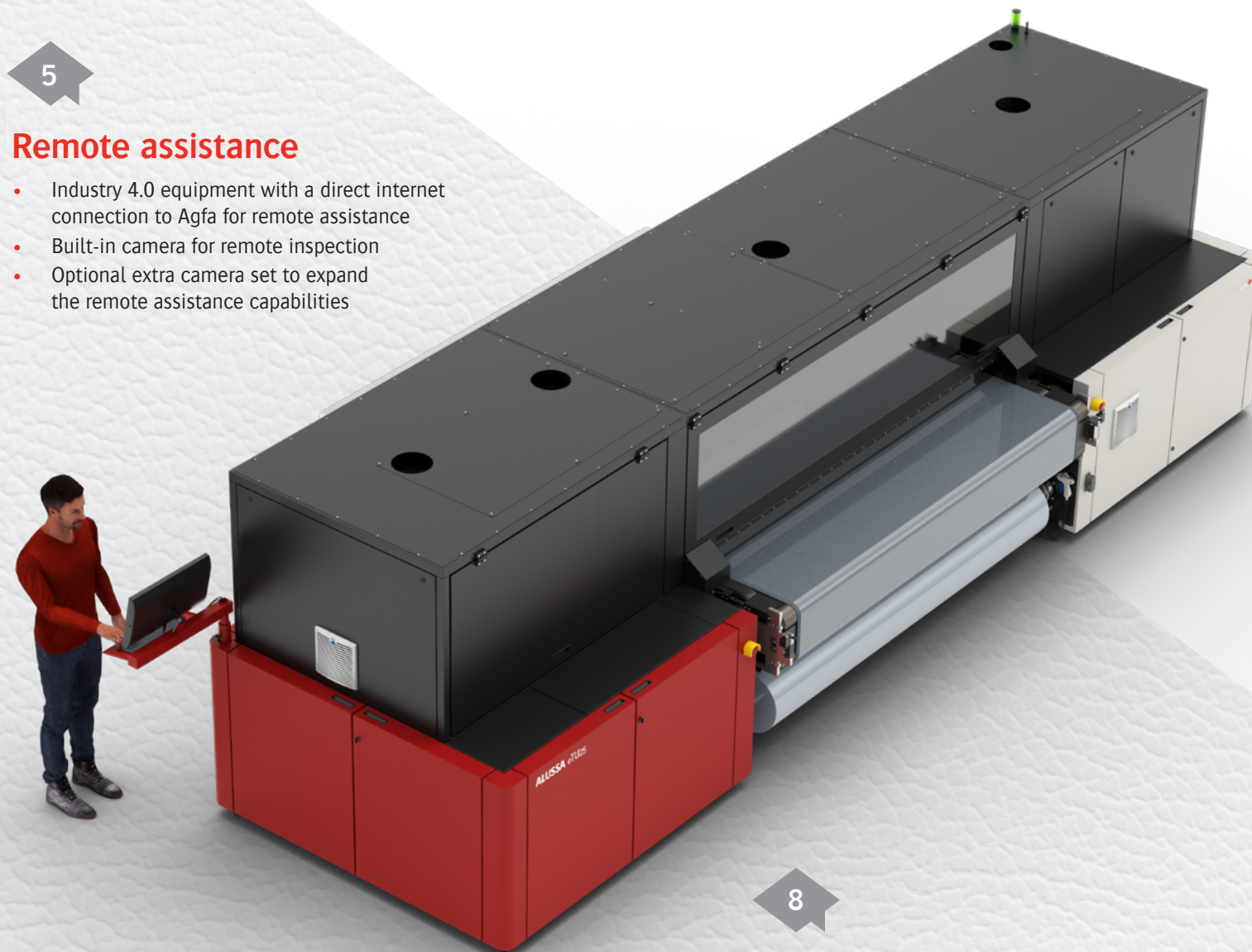
- Equipped with Ricoh Gen5 print heads firing at a frequency of 38,000 Hz
- Anti-electrostatic system with ionizing air blowers
- Advanced protection with laser safety sensors
- Linear motors & encoder strips to guarantee perfect dot placement



5

Remote assistance

- Industry 4.0 equipment with a direct internet connection to Agfa for remote assistance
- Built-in camera for remote inspection
- Optional extra camera set to expand the remote assistance capabilities



8

Leather feeder xLF & dedicated sticky film

- Acts as a carrier to transport the leather through the printing system
- To broaden the scope of leathers that can be processed – including uneven, flexible and soft leather
- Optional roll loader
- The sticky film can be recycled

6

Clean & ergonomic ink supply system

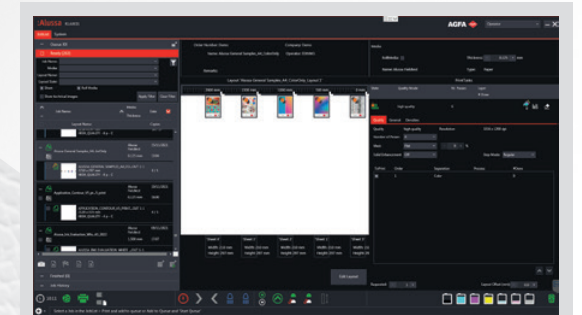
- Large ink containers for long uninterrupted printing
- Integrated RFID tag reader to ensure correct ink supply and easy refilling
- Ergonomic access to the print shuttle to perform maintenance



7

Advanced GUI design

- Integrated with award-winning Asanti workflow software via bi-directional communication
- Provides production information: job lay-out, print queue, run lengths...
- Provides printer information: ink levels, required maintenance, UV settings...



Specifications

PRINTER CONFIGURATION

- 32 print heads piezoelectric Ricoh MH5420
- 6 colors: CMYK, light C, light M
- White ink

PRODUCTIVITY (m²/h)

	W+C			C		
	21 x 14,5 cm	47 x 26 cm	120 x 80 cm	21 x 14,5 cm	47 x 26 cm	120 x 80 cm
Linework	19	29	40	28	43	58
Text	21	32	43	41	74	87
Vector image/ pattern	13	20	26	24	37	40
(Photographic) raster	14	21	29	41	64	87

UV LED MODULES

395 nm curing wave length

IMAGE & TEXT QUALITY

- Resolution up to 1200 dpi
- Printing up to a maximum of 8 passes
- Text quality: 6 point
- Up to 600,000+ colors

PRINTER DIMENSIONS (D x W x H)

2018 mm x 8160 mm x 2240 mm

ENERGY

- Compressed air
- Electrical power: Delta 3-Phase connection + Earth (no neutral) 400 V or 480 V 50/60 Hz
- Exhaust

OPTIMAL WORKING CONDITIONS

- Temperature 16-25 °C (61-77 °F)
- Relative humidity 40-60 %

OPTIONS

- External camera system
- Roll lifter/loader

SYSTEM INTEGRATION RIP/WORKFLOW SOFTWARE

Asanti, Storefront, PrintSphere, third-party rips

