

**EXTREME QUALITY.
EXTREME PRODUCTIVITY.**
Sign & Display inkjet printing solutions

AGFA 

Jeti LED series

Jeti Mira MG2716 LED

— 270 x 160 or 320 cm), 248 m²/h —



Jeti Mira MG2732 LED

This award-winning true flatbed system based on UV LED inkjet technology offers impressive print quality across a wide variety of materials at high production speeds. Available in two sizes, with a width of 2.69 m and a worktop depth of 1.6 m or 3.2 m, it achieves throughputs of up to 248 m²/h. The optional roll-to-roll unit lets you print on flexible media up to 2.05 m wide. Further options include varnish or primer print heads.



Jeti Tauro H2500 LED

— 254 cm, 275 m²/h —



The Jeti Tauro H2500 LED is a true hybrid inkjet press: ruggedly built to easily handle extreme workloads, 24/7 printing with speeds up to 254 m²/h on a wide variety of rigid and flexible substrates. It is suited for substrate widths of up to 2.54 m and rigid media up to 4 m, offering you countless options to create eye-catching prints.

Options include an Automatic Board Feeder and Automatic Unloader, white and primer print heads (4W, 4W+2P, or 8W), and a Master Roll-to-Roll module for jumbo rolls of up to 700 kg per roll.



Jeti Tauro H3300 LED family

Agfa's UV LED flagship hybrid presses offer 24/7 productivity and award-winning quality on a wide range of rigid and flexible materials with the lowest ink consumption. They reach a throughput of up to 600 m². The **Jeti Tauro H3300 UHS LED** is the ultra-high-speed top model, fit for the very highest productivity. Just like the **original Jeti Tauro H3300 LED**, it is available in a four- and a six-colour version. The **Jeti Tauro H3300 S LED** (S for 'standard') is a six-colour entry-model that can be upgraded to the speed of its bigger brother, thus becoming a Jeti Tauro H3300 HS (HS for 'high speed'). As such, it offers an attractive growth path for your business.

All three Jeti Tauro H3300 LED models can be enhanced with semi-automatic or full-automatic loading and unloading of rigid media. Furthermore, they can be fitted with a Light Roll-to-Roll for single rolls of up to 200 kg or a Master Roll-to-Roll system for jumbo rolls of up to 700 kg per roll in both single- and dual-roll mode. Optional features include white and primer print heads.

— 330 cm, 600 m²/h —



Anapurna LED series

The Anapurna LED series for wide-format printing is the perfect solution for visual communication specialists, digital printers, photo labs and medium-sized screen printing companies that are looking to print on rigid and flexible material. Anapurna LEDs have a print width of up to 3.2 m and provide high quality and productivity for indoor & outdoor applications. UV LED curing allows to print on a wider range of media, while saving energy, costs and time.

White print heads enable printing on transparent materials for back-lit applications, or using white as spot colour or for elevated printing. Combined with Agfa's own Anapurna inks, the Anapurna LED series guarantees a large colour gamut, reproduction of small text up to 4 point, excellent tonal rendering and a low ink consumption. Equipped with powerful 16 Watt/cm² air-cooled LED lamps, every Anapurna LED offers various advantages in economic, ecological and business terms.

The standard roll-to-roll system is built to ensure perfect tensioning of the material thus avoiding skewing and wrinkling. Ionizing bars mounted on the print carriage remove electrostatic charges from the substrate, ensuring optimal positioning of ink drops without spray.

Anapurna H1650i LED



165 cm, 63 m²/h

Anapurna H2050i LED



320 cm, 129 m²/h

Anapurna H2500i LED



250 cm, 115 m²/h

Anapurna H3200i LED



320 cm, 129 m²/h

Anapurna RTR3200i LED



320 cm, 127 m²/h

Anapurna FB2540i LED



254 x 154 cm, 96 m²/h

Key benefits of Agfa's Anapurna LED series

- High-quality, high-productivity printing on a wide range of rigid and flexible media
- Robust industrial engineering fit for high workloads
- UV LED lamps that enable printing on sensitive materials — saving costs, time and the environment
- Agfa-made UV LED inks for fast drying, material versatility and a very wide colour gamut
- Printing pre-, sandwich and post-white in one run
- Thin Ink Layer technology for the lowest ink consumption in the market
- Powered by Asanti workflow software

Oberon RTR3300

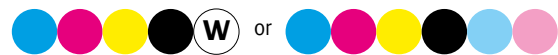
The Oberon RTR3300 is a dedicated 3.3 m high-end roll-to-roll machine that combines excellent print quality and high throughput with a unique ease of use. Featuring UV LED curing and a water-cooled print plate that keeps the printing zone at room temperature, the Oberon RTR3300 is capable of printing on a wide range of flexible materials, even the most heat-sensitive ones. It transforms self-adhesive vinyl, static cling or backlit film into vibrant, multi-layered graphics that grab attention.

The Oberon's capability to print on mesh without liner lets you expand your horizon and meet your customers' creative dreams. Its dual-roll option enables more efficient printing on two rolls of smaller media, up to 1.6 m wide. Media use is super-efficient thanks to a number of smart features, including the free fall option, a double safety light curtain and a light box that helps you check the quality of backlit prints right away.

Agfa's UV LED inks on the Oberon RTR3300 were optimized for flexible media and excel in smooth tonal rendering and razor-sharp texts.

Key benefits

- Extremely wide media and applications scope
- Dual-roll printing option for increased flexibility and convenience
- Liner-free mesh printing
- Optimal media use thanks to a range of smart features
- Outstanding ease of use
- Dedicated & certified Agfa-developed inks for the best quality and the lowest ink consumption
- Driven by Agfa's Asanti workflow



330 cm, 224 m²/h

Avinci CX3200 soft signage printer

Agfa's dedicated dye sublimation roll-to-roll printer lets you create vibrant high-quality prints on polyester-based fabrics up to 3.2 m wide, including as backlit point-of-sales displays, indoor wall graphics, outdoor advertising, block-outs, backdrops, flags, or retail store décor elements. In addition, it can also be used to print polyester-based sportswear or fashion garments. You name it, Avinci is up to the challenge.

The Avinci CX3200 is a highly reliable and convenient engine that is able to print directly to fabrics, as well as onto transfer paper. Whereas direct printing is perfect for the easy and fast handling of special applications such as flags (requiring print-through), transfer paper allows for super-sharp prints, eliminates any set-off, and limits media waste to a minimum. In addition, it extends the application scope to sportswear and fashion garments, as well as home décor prints.

The Avinci CX3200 uses an off-line calender unit to ensure perfect fixation.

Key benefits

- Dedicated dye sublimation soft signage printer
- Direct to textile or with transfer paper
- Excellent print quality and fine detail rendering
- High productivity and a robust design for reliable printing at all times
- Convenient operations and a fast changeover between jobs
- Low ink consumption
- Powered by Agfa's Asanti workflow software



320 cm, 270 m²/h

Matched components

Every Agfa large-format system builds on decades of experience in designing, developing and manufacturing integrated inkjet printing systems. We know how all components interact. Our unique system approach aligns engine, inks, media, workflow and colour management software to ensure the highest quality and a consistent and reliable production process from start to finish.

Asanti StoreFront

Make it easy for customers to upload files and order large-format prints using our Asanti web-to-print software solution. Streamline order fulfilment and improve customer retention. Reduce costs and improve time-to-market.



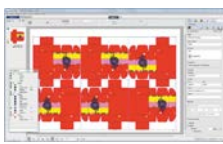
Stop creating the same type of quotes every day. Stop searching for the files that your customer uploaded somewhere. Asanti StoreFront makes it easy for your customers to order products online. Create an easy to use portal in which your customers can place orders, whenever they want and from wherever they are.

Asanti StoreFront streamlines your order intake and extends your customer service.



You don't need HTML know-how or scripting skills to set up stores with Asanti StoreFront. Let us take care of system maintenance and security while you focus on your core business: satisfied customers who keep coming back with new orders.

Simplify the ordering process and offer a 24/7 service to your customers.



Print jobs are exported to FTP or your network. When used in conjunction with Asanti Production, the orders are automatically downloaded and queued for production. Prepress operators remain in control and can still step-and-repeat POP orders, tile banners and add all necessary marks, if needed.

The integration saves operator time and allows you to centralise production for multiple printers.

Asanti Production

Asanti is a complete, automated Sign & Display production hub and workflow tool featuring Agfa's unique and award-winning colour management solution, integration with the latest version of Adobe PDF Print Engine (APPE), highly specific application functionalities (e.g. nesting, see-through concept, proofing support) and fast, automatic pre-flighting. Streamline your workflow with Asanti and you'll avoid errors, minimize manual interventions, shorten pre-press procedures and simplify your entire printing process. The result? A fully accountable end-to-end quality and data management solution that boosts your business.

Key benefits

- One tool to manage all your print data and devices
- Built-in Agfa colour management, for consistent colour quality and reproduction with minimal effort.
- Automatic pre-flighting, PDF checking and managing of your entire printing process.
- Integrated solution for increased productivity and reliable, predictable and high-quality output.
- Intuitive user interface to manage everything from a single digital environment.
- Integration with Asanti StoreFront web-to-print, Adobe PDF Print Engine (APPE) and PrintSphere.



Microsoft Partner
Gold Application Development



GOLD
Solution Partner

Agfa partners with the world's leading software companies to deliver first-class solutions for print production workflows.



ASANTI Network

Discover a wealth of knowledge on Asanti Network, the official online community for Asanti users.

asanti.agfa.net



Agfa UV LED inks

Specially formulated to print on rigid or flexible media, Agfa's award-winning UV LED inks broaden the scope of possible applications. Whatever the medium or intended use – general applications, indoor or outdoor – accuracy and excellent adhesion are a given.

Agfa-made UV inks boast a wide colour gamut and high colour vibrancy, resulting in lively yet natural prints that will impress and inspire every time. Agfa inks are LED cured instantly, delivering consistent high-quality results, batch after batch. What's more, this vividness is created to last, even when subjected to outdoor weather conditions.

Thanks to Agfa's patented 'Thin Ink Layer' technology – which is based on a combination of pigments with exceptional colour strength, perfectly matched printer components that warrant low waste and maintenance, and smart algorithms in Agfa's Asanti workflow software – ink consumption per square meter is the lowest on the market. That means you can create eye-catching prints while saving on your budget.

Agfa UV LED inks obtained multiple certifications – including GREENGUARD Gold – and comply with a range of industry norms that pertain to the restricted use of chemicals listed by the European Union, to chemical emissions and air quality in indoor applications, to safety for toys regarding heavy metals migration and to the restriction of hazardous substances in electrical and electronic equipment.



EXTREME COMMITMENT

Today's printing professionals face tough challenges. How can you stay on top of things when turnaround is faster than ever? What's the best way to manage your increasingly complex workflows? Are you keeping pace with all printing technologies? How to control costs and increase profit margins?

If questions like these sound familiar, we would love to deploy our know-how and expertise to help you find the right answers and to help you grow your business.

We believe in print as an essential and powerful medium of communication. Our mission is to enable printing businesses to achieve profitable growth. We do this by offering you integrated solutions which are innovative, reliable, sustainable, cost-effective and price-competitive, enabling you to adjust swiftly to new market demands. In doing so, we rely on more than 150 years of experience and innovation.

www.agfa.com

BEST PRINT QUALITY

AGFA

Excellent Rendering

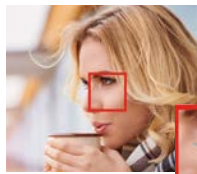
Details in shadows



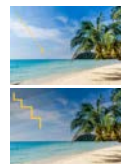
Details in highlights



Sharp vectors

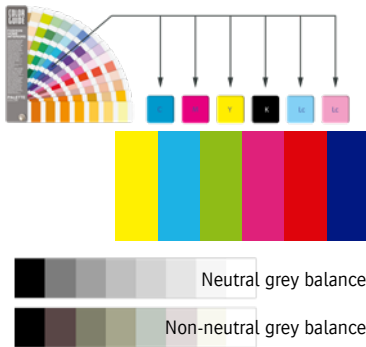


Smooth skin tone rendering and smooth ramp-ups over tonal range



Lowest noise rendition

True Colours



Large colour gamut and accurate spot colour mapping

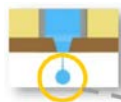
Artefact-free solid colour reproduction

Neutral grey balance

Neutral grey balance

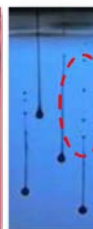
Non-neutral grey balance

Tuned Agfa ink with Agfa waveform



AGFA 

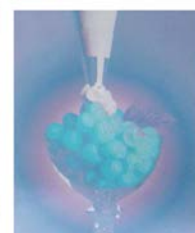
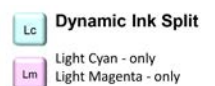
Others



Agfa's optimal drop formation achieves:

- minimal tail length of ink drop
- outstanding dot positioning
- avoiding mist / ink satellites

Asanti InkSave Dynamic Ink Split (DIS)



Agfa's patented technology to make optimal usage of "light" colours (Lc—Lm—Lk)

A

Agfa

LOWEST INK CONSUMPTION

Asanti InkSave GCR/UCR



Original
C 40%
M 50%
Y 20%
K 10%
120%



Grey component = 20%

20%

- 20%

+ 20%

120%

80%

10%

20%

30%

40%

50%

60%

70%

80%

90%

100%

110%

120%

130%

140%

150%

160%

170%

180%

190%

200%

210%

220%

230%

240%

250%

260%

270%

280%

290%

300%

310%

320%

330%

340%

350%

360%

370%

380%

390%

400%

410%

420%

430%

440%

450%

460%

470%

480%

490%

500%

510%

520%

530%

540%

550%

560%

570%

580%

590%

600%

610%

620%

630%

640%

650%

660%

670%

680%

690%

700%

710%

720%

730%

740%

750%

760%

770%

780%

790%

800%

810%

820%

830%

840%

850%

860%

870%

880%

890%

900%

910%

920%

930%

940%

950%

960%

970%

980%

990%

1000%

1010%

1020%

1030%

1040%

1050%

1060%

1070%

1080%

1090%

1100%

1110%

1120%

1130%

1140%

1150%

1160%

1170%

1180%

1190%

1200%

1210%

1220%

1230%

1240%

1250%

1260%

1270%

1280%

1290%

1300%

1310%

1320%

1330%

1340%

1350%

1360%

1370%

1380%

1390%

1400%

1410%

1420%

1430%

1440%

1450%

1460%

1470%

1480%

1490%

1500%

1510%

1520%

1530%

1540%

1550%

1560%

1570%

1580%

1590%

1600%

1610%

1620%

1630%

1640%

1650%

1660%

1670%

1680%

1690%

1700%

1710%

1720%

1730%

1740%

1750%

1760%

1770%

1780%

1790%

1800%

1810%

1820%

1830%

1840%

1850%

1860%

1870%

1880%

1890%

1900%

1910%

1920%

1930%

1940%

1950%

1960%

1970%

1980%

1990%

2000%

2010%

2020%

2030%

2040%

2050%

2060%

2070%

2080%

2090%

2100%

2110%

2120%

2130%

2140%

2150%

2160%

2170%

2180%

2190%

2200%

2210%

2220%

2230%

2240%

2250%

2260%

2270%

2280%

2290%

2300%

2310%

2320%

2330%

2340%

2350%

2360%

2370%

2380%

2390%

2400%

2410%

2420%

2430%

2440%

2450%

2460%

2470%

2480%

2490%

2500%

2510%

2520%

2530%

2540%

2550%

2560%

2570%

2580%

2590%

2600%

2610%

2620%

2630%

2640%

2650%

2660%

2670%

2680%

2690%

2700%

2710%

2720%

2730%

2740%

2750%

2760%

2770%

2780%

2790