



ASANTI

Workflow software for
streamlining and automating
large-format color management
and printing processes

Asanti is a complete, automated Sign & Display production hub and workflow tool. It is powered by the latest version of Adobe PDF Print Engine, and features Agfa's unique and award-winning color management solution and pre-flighting.

ASANTI

In a world where time is money, Sign & Display producers need streamlined, automated processes that deliver nothing less than sublime end results. Enter Asanti – advanced yet easy-to-use workflow software for wide-format printing.

Streamline your workflow

Asanti is a **complete, automated Sign & Display production hub** featuring Agfa's award-winning color management technology, powered by the latest version of Adobe PDF Print Engine (APPE). It boasts highly specific functionalities (e.g. nesting and tiling), support for various applications (e.g. banners, displays, see-through prints), and fast, automatic PDF pre-flighting.

Streamline your workflow with Asanti and **you'll avoid errors, minimize manual interventions, shorten pre-press procedures and simplify your entire printing process.** The result? A fully accountable end-to-end quality and data management solution that boosts your business.

Time is money, convenience is key

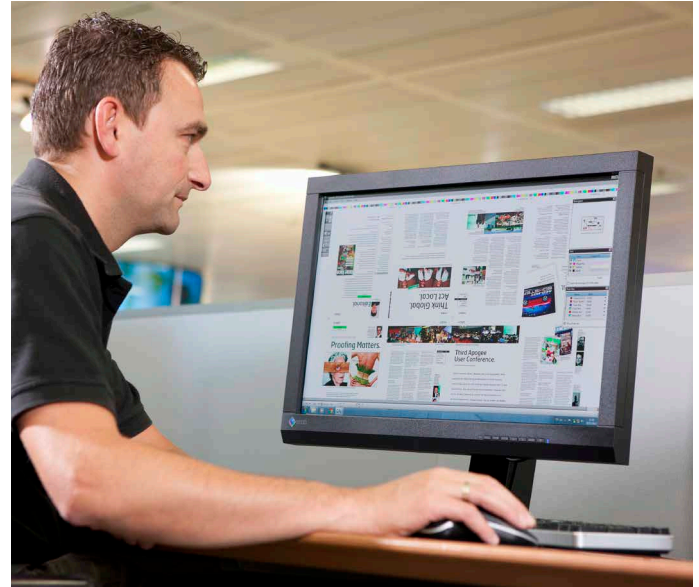
Automation and pre-flighting

As a scalable workflow tool that distributes input from various sources over multiple hardware systems, Asanti promotes **productivity, efficiency and a centralized way of working.** Moreover, it optimizes production through specific automation tools (e.g. nesting, tiling, media handling, parameter presets, smart DQS possibilities), automated file intake (e.g. Asanti StoreFront and PrintSphere) and powerful pre-flighting.

Asanti **Preflight** demonstrates its worth in time and cost savings by reducing idle time on printers, standardizing processes and avoiding errors. Automatic checking of PDFs and other file formats catches potential issues at an early stage and ensures that all jobs are prepared correctly. Needless to say, this results in **better quality control, faster turnaround and less waste.**

Asanti Autocollect automatically gangs incoming images that need to be printed on the same media in the same quality. It reevaluates the ganging possibilities each time a new PDF comes in, and submits the job to the printer when particular pre-defined criteria are met – thus minimizing waste.

In addition, the **Asanti Automate Task Processor** provides flexibility for collecting Hot Tickets by defining various rules/conditions that steer the processing of input document, depending on their attributes.

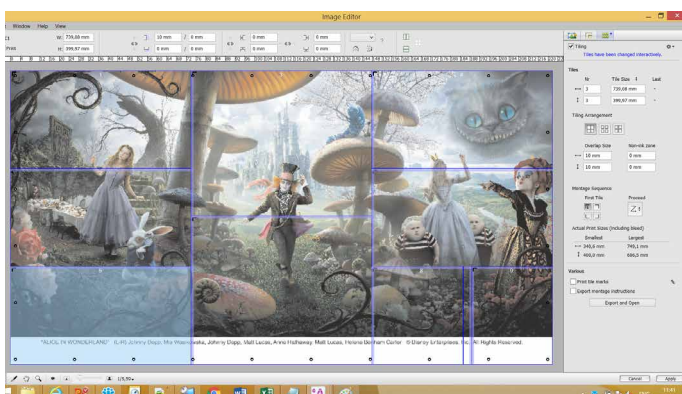


Key benefits

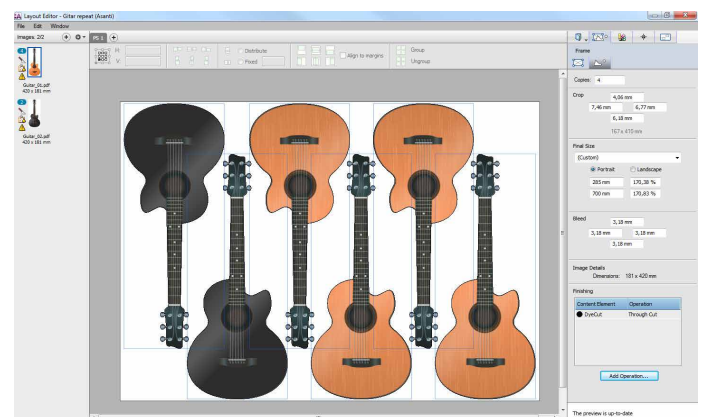
- A single tool with an intuitive user interface to manage all your print data and devices
- Built-in Agfa color management, for consistent color quality and reproduction with minimal effort
- Automatic pre-flighting, PDF checking and managing of your entire printing process
- Integrated solution for increased productivity and reliable, predictable and high-quality output
- Integration with Asanti StoreFront, PrintSphere and PrintTune
- Powered by the latest Adobe PDF Print Engine (APPE)

The power of APPE

Asanti's integration of the latest **Adobe PDF Print Engine (APPE)** allows for new levels of freedom and creativity. For example, it manages the generation of PDF master files while eliminating the need for manual intervention during the workflow process. Furthermore, device-dependent processes are driven by instructions within APPE, with PDF technology ensuring end-to-end consistency across all devices.



Interactive setup with grommets

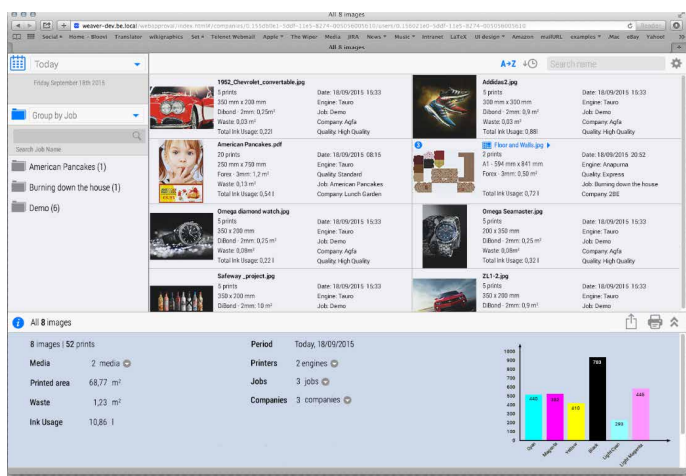


True shape nesting view options

Intuitive user interface & dashboard

Asanti's easy-to-use, intuitive GUI **features improve job layout and positioning visualization**; operators can see exactly what they are printing and have easy access to key print parameters to make sure last-minute changes are applied swiftly. The GUI also shows print progress and printing time estimations.

A specialized **production dashboard** displays all your print jobs, reports on the number of prints, statuses of multiple engines, ink levels, elapsed time and more – all in one advanced digital environment. This smart browser-based reporting tool interfaces with your accounting tools and will enable you to **fine-tune quotes and focus on high-margin products**.



Production dashboard summary pane

Modular structure

The **Asanti suite** consists of several modules.

- **Asanti Render** is the core module of the Asanti workflow. It is a single-platform ripping solution that uses the latest Adobe PDF Print Engine (APPE) to render files for a wide range of large-format printers, taking care of pre-flighting and job conversion to guarantee smooth, error-free job handling and consistent print quality.
- If you are looking for even more automation, then you should definitely consider **Asanti Production**. It includes automatic media optimization and template-based production, streamlines your print operations through automatic job layout and positioning, and automatic true-shape-nesting. The automatic collection of images allows you to gather all artwork for a specific press and specific media, and to optimally nest it on the print sheet or roll, taking copy count and bleed into account.
- In addition, there is a palette of Asanti Enhancers at your disposal to further expand your output possibilities.

Another plus when it comes to Asanti's usability is the **tiling** interface which enables you to organize highly complex projects in an easy way. It even adds instructions for installation (the mounting sequence) directly from the print job.

Support for packaging

Embedded in the Asanti interface is all functionality required to **prepare and process packaging jobs on your digital printer**. Asanti lets you import and manage cut lines, and automatically snags the images to the right position delimited by the lines provided in the CAD/CAM file. It enables operators to resolve any potential bleed overlap and work out line types for structural and technical processing like dimensions, annotations, foils, glue, varnish...



Asanti Workflow

FILE INPUT
DATA EXCHANGE

WEB-TO-PRINT

BUSINESS TOOLS

PRE-FLIGHTING

COLOR MANA



MANAGEMENT FILE PROCESSING PRINTING & FINISHING FINAL PRODUCT



Color management

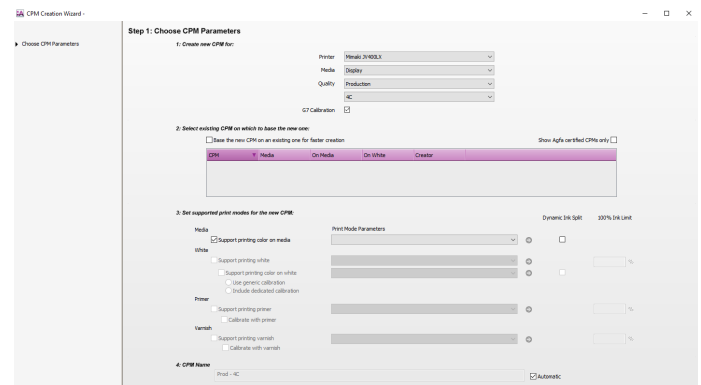
Asanti's integrated color management wizard supports the G7 method to achieve visually accurate colors.

Accuracy and consistency

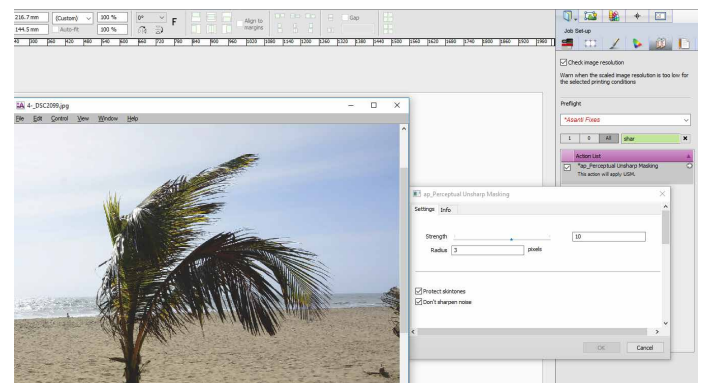
Optimizing your entire production process, this unique workflow software offers end-to-end quality for **predictable results and superior color fidelity**. It features full compatibility with pre-determined ICC profiles, the ability to generate custom profiles and convenient proofing support.

IntelliTune for Sign & Display

Asanti allows you to **automatically analyze and improve image quality** with Agfa's IntelliTune. This image optimization software not only eliminates noise, staircasing and blurriness; it also optimizes skin tones based on extensive research and analysis. Truly unique in the world of Sign & Display, IntelliTune is fully integrated into Asanti and contributes to the simplification of your workflow.



G7 Support



IntelliTune – unsharp masking

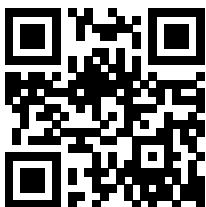


Integration and versatility

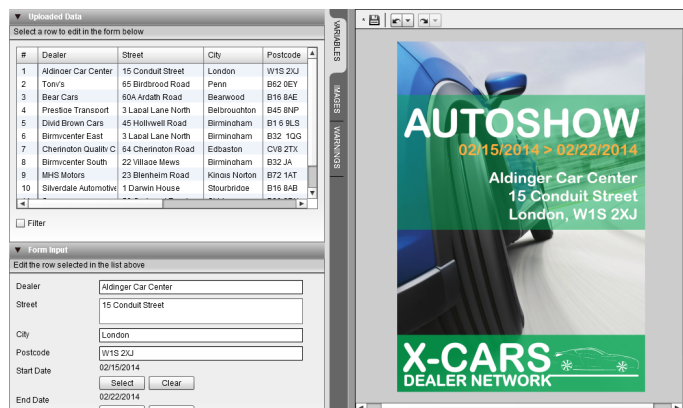
Integrating functions

Asanti's functionality results in optimal compatibility with other software tools and third-party print production systems. Using a standardized JDF-compliant job ticketing system, Asanti controls and automates everything from start to finish, regardless of output device.

Online business

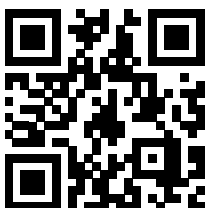


As a cloud-based web-to-print solution that enables print buyers to place orders online 24/7, **Asanti StoreFront** will help you expand your customer base and increase your revenue in no time.

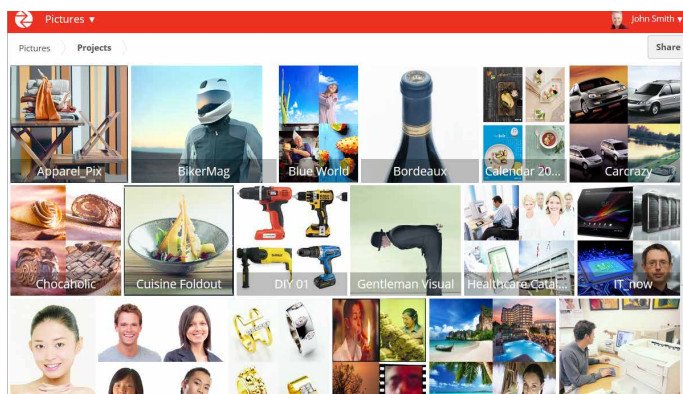


Asanti StoreFront variable data

Data management



Asanti integrates perfectly with **PrintSphere**, Agfa's cloud-based service that offers a standardized way for production automation, easy file sharing and safe data storage.



PrintSphere data management

Standardization



Streamline your operations even more with our comprehensive and unique print standardization solution **PrintTune**. This software guarantees color consistency and ensures that printing jobs meet in-house standards or commonly known color spaces from Fogra or IDEAlliance. Through measuring and powerful analytics, it delivers an objective evaluation of printing jobs, which will help lower media waste, increase efficiency and productivity, and improve communication between operators, quality management and print buyers.

Driving multiple devices

Today's wide-format specialists often own multiple print devices and use different ink formulations, which makes generating consistent print results regardless of machine width, ink colors or print media quite challenging. Asanti, however, manages these differences in a transparent manner, making it easy to drive engines of all sizes and types, from a variety of different manufacturers.

Perfect for Jeti Tauro

The Jeti Tauro is Agfa's high-end, hybrid UV inkjet printer. It is especially suited for integration with Asanti, which then streamlines the entire workflow by dramatically reducing the error margin, thus shortening pre-press procedures. This is achieved by transferring all necessary print settings of each job to the Jeti Tauro, which automatically applies them. The GUI offers access to key print parameters to make sure any last minute changes can be applied quickly and easily.

Asanti v5 features a new mechanism for the creation of double-sided prints. This helps the operator to easily prepare these jobs on the Jeti Tauro engines, which offer native support for double-sided prints.

Discuss and exchange ideas: AsantiNetwork

Discover a wealth of knowledge on AsantiNetwork, the official online community for Asanti users. Interesting facts and information covering a wide range of technology topics, tips and tricks, release notes, user guides, software, downloads and more – AsantiNetwork is there to help and inspire you.

Even more, it hosts an online database that includes brochures, product movies and computer-based trainings, and a user forum where users can discuss and exchange ideas about various Asanti topics.

<https://asanti.agfa.net/>

