

# Arkitek Enhance OptiInk

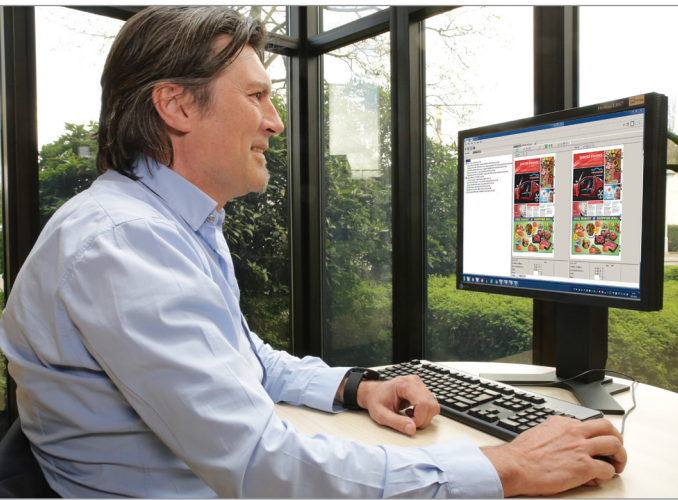
***Save more ink than you'd think!***

Readers expect higher quality; advertisers and publishers demand it. Yet costs continue to climb. Arkitek Enhance OptiInk saves ink costs and at the same time enhances print quality.



STAY AHEAD. WITH AGFA GRAPHICS.

# Arkitek Enhance OptiInk



Arkitek Enhance OptiInk offers you great gains in productivity and great savings on ink costs.

## Greater savings on ink costs

Arkitek Enhance OptiInk uses Dynamic Low-Ink Coverage (DLC) technology to produce the maximum possible ink saving. In conjunction with Agfa's patented Advanced Color Management, it also maintains the highest level of quality and color fidelity.

Even further savings can be made due to faster press start-up resulting in lower paper waste, fewer web breaks and higher printing speeds.

## Quality improvements

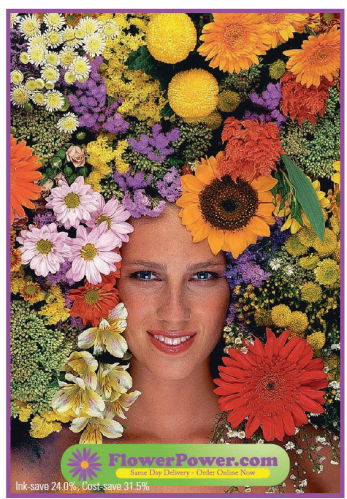
There are other quality benefits from using Arkitek Enhance OptiInk. These include

- Reduction of set-off
- Greater press stability and consistency right through the print run
- Better reproduction of gray and neutral colors
- Reduction of visual effect of misregistration

OptiInk also features the ability to sharpen, smooth and perform noise reduction on all images in the output files.

## Absolute automation

Once you set up your parameters, Arkitek Enhance OptiInk needs no further intervention. It operates in the background to increase productivity and quality while saving ink... up to 50%!

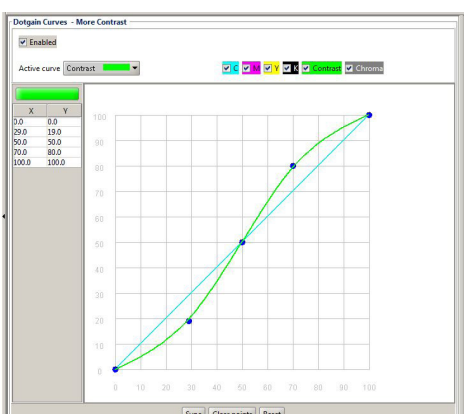


OptiInk can intelligently sharpen or smooth the images on output. This example shows the sharper detail of the petals in the lower circle.



Arkitek Enhance OptiInk uses Dynamic Low-Ink Coverage to provide a very high level of ink cost saving, and yet improve the quality of the printed output





Tunability the easy way – dot gain curve feature

### Dot gain curves

This feature enables you to tune the output quickly and easily to handle mismatches between the actual press behavior and the standard profiles. This eliminates the need to make new profiles, which is expensive and time-consuming.

This is also useful for customers who wish to print a more saturated output, or simply to set up images to be consistently lighter or darker.

### Standalone or integrated

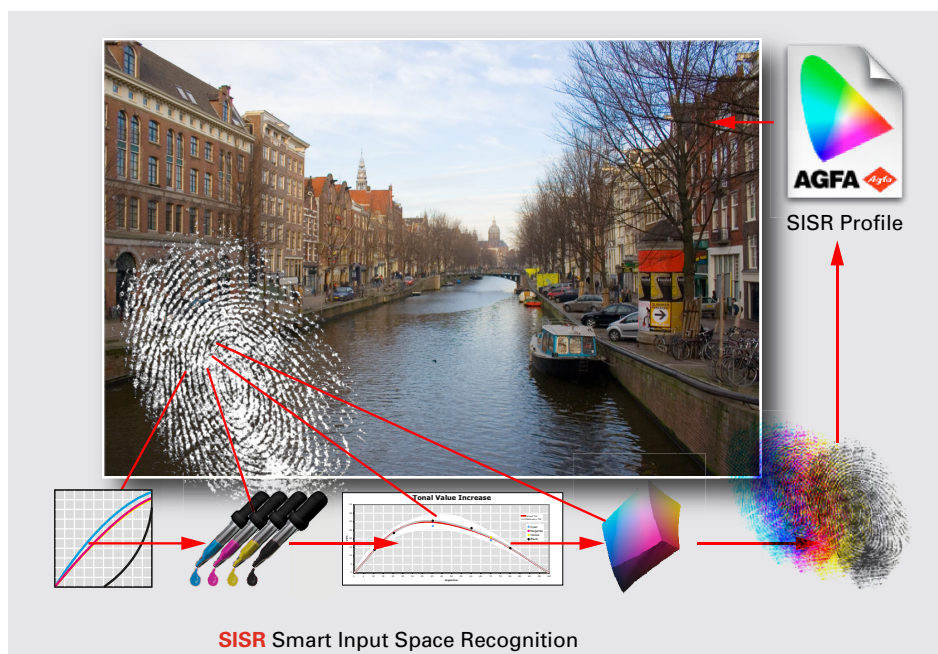
Arkitex Enhance OptiInk is completely independent. It can run totally stand-alone, or be integrated into Agfa Graphics' Production workflow, or any other workflow. Its automatic intelligence makes it so easy to use that it requires no special in-house knowledge once installed.

You can even use your existing color profiles, or conform to any of the standard. Arkitex Enhance OptiInk's flexible open architecture and ICC compatibility makes it possible.

### Intelligent profile recognition

Arkitex Enhance OptiInk features Smart Input Space Recognition (SISR). This ensures you get good results even when the color space used to make the PDF is inappropriate, or unknown.

SISR recognises the profile from the color fingerprint of the image, and can even overrule wrongly embedded profiles or output intents to ensure you get correct color output, every time.



The secret behind the automation of source space recognition. Every profile has its own "color fingerprint" and SISR can recognise it from the color separations.

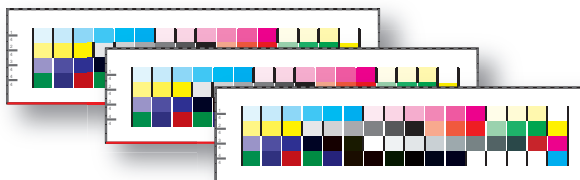
### Arkitex Enhance OptiColor

Imagine you wanted to ensure all incoming PDFs automatically produced the original intended vivid color on output, even if the profile used for the separation is unknown. Or you wanted to make a last-minute decision on which presses, or other output devices, any page would be outputted to.

Arkitex Enhance OptiInk can do this as standard. In addition, this functionality is now available as a stand-alone program called Arkitex Enhance OptiColor.

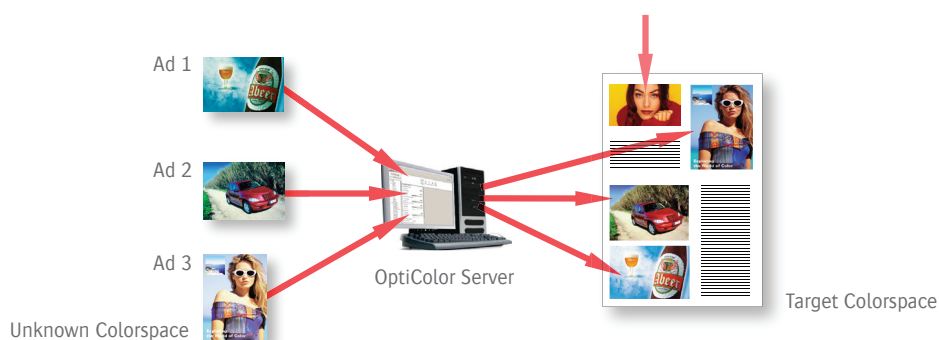
#### Key benefits

- Automatically converts color on the fly to the target space, using automatic Smart Input Space Recognition (SISR)
- All press and paper industry standards are included
- Multi-channel output, producing PDF outputs for multiple press outputs, web and mobile platform use
- Includes a small-target reprofiling tool to make fast-track press profile adjustments

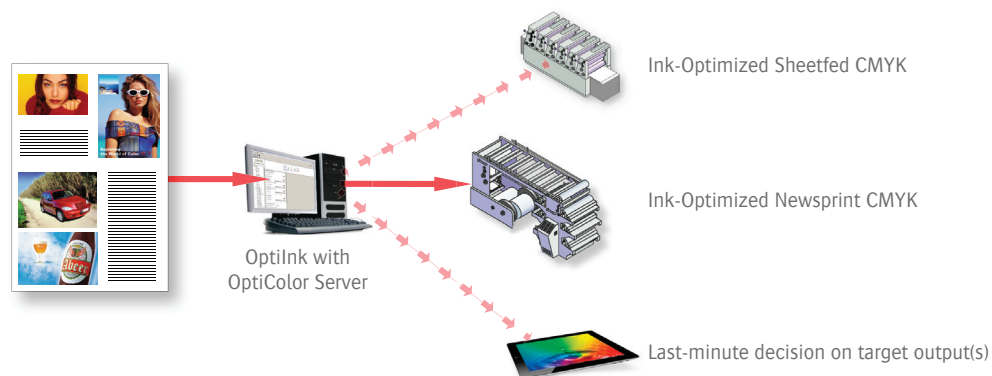


Ultra-fast-track reprofiling in OptiColor and OptiInk

**Wherever a color transformation server is required, Arkitex Enhance OptiColor is the ONLY product on the market that totally automates the process from beginning to end.**



OptiColor: transforms unknown sources automatically to the intended target space



OptiColor: transforms a file to a multiple set of targets, or make last-minute output decisions

[www.agfagraphics.com](http://www.agfagraphics.com)