

# Arkitek Enhance IntelliTune

*Today's challenge is to control costs while retaining printed quality – not always easy when images come in with large variations in quality and consistency.*

Arkitek Enhance IntelliTune meets that challenge, offering an intelligent, production-minded solution to guarantee that you can consistently publish the highest quality images, and ensures all your printed images have a consistent look and feel.



STAY AHEAD. WITH AGFA GRAPHICS.

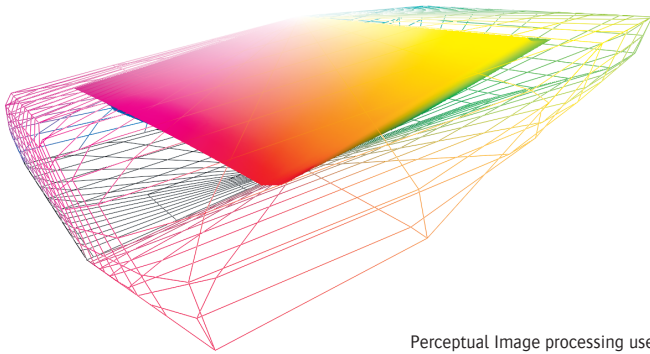


# Arkitek Enhance IntelliTune



High-quality pictures attract more readers and advertisers. What if you could print your newspapers as fast as you do now, but with even better print quality for your pictures? Arkitek Enhance IntelliTune makes your pictures even more eye-catching by automatically applying corrections for each of your channels. Web, print and/or mobile? IntelliTune analyses the tone, color and spatial characteristics of your images. It improves contrast and removes noise. It sharpens details, makes skin tones more realistic and improves general clarity. Not by applying a one-size-fits-all technique, but by analyzing each and every image – quickly, easily and automatically.

Do you want a stunning front page every day?  
Then Arkitek Enhance IntelliTune is what you are looking for.



Perceptual Image processing uses a device-independent working space

## Easy-to-use tools

Arkitek Enhance IntelliTune's intuitive icon-driven interface is easy to learn and use. Its automatic color and artefact corrections, intelligent sharpening, smoothing and noise reduction, and interactive editing capabilities all make the software easier to learn and more productive to use. Simplified browser-based clients are available for use on Mac platforms.

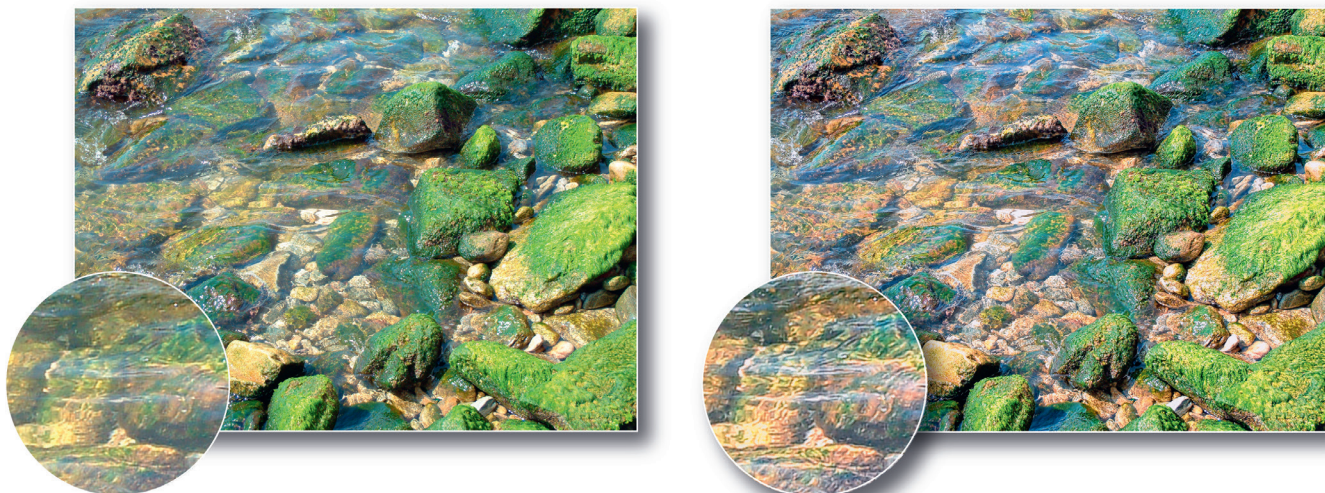
## Perceptual image processing

Image processing using a device-independent working space enables enhancements suitable for a wide range of applications, including newspapers, conventional commercial and inkjet print jobs. This results in unprecedented skin tone enhancement, including the ability to sharpen or smooth faces and skin automatically.



This pair of images shows the advanced skin tone filtering, available in both IntelliTune and OptiInk





Showing ACE in action – bringing out details that are otherwise less visible

### Adaptive Contrast Enhancement (ACE)

Adaptive Contrast Enhancement (ACE) gives results that put Arkitek Enhance IntelliTune way ahead of its competitors. It processes images with details in highlight as well as shadow areas, preserving the details in both. ACE also brings out details, even better than USM, and images look sharper and clearer than ever before.

### Resolution-independent sharpening

Sharpening is a matter of context. You do not want the same sharpening carried out on a journalist's photo as on a shot taken on a mobile phone.

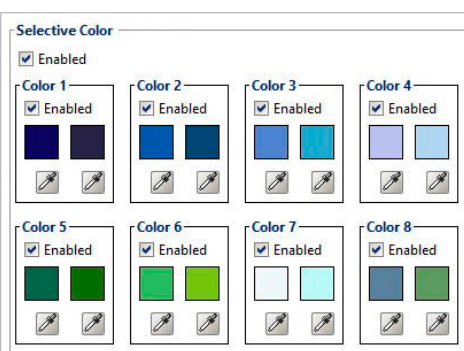
Arkitek Enhance IntelliTune applies the sharpening, smoothing and noise reduction taking the resolution of the image into account. This ensures that a range of images from different sources shares the same look and feel, independently of whether these images are provided as separate files or already in a final PDF file.

### Memory colors

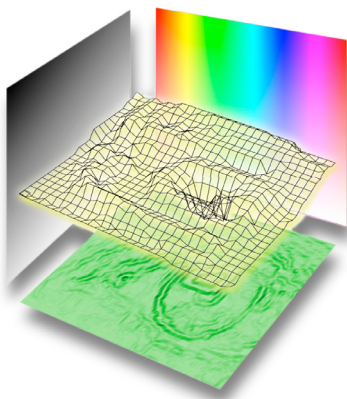
Arkitek Enhance IntelliTune features Selective Color Correction. This applies automated memory color corrections. Presets such as Nature, Landscapes and Architecture can be called up to generate the appropriate look and feel for those special images. Alternatively, a user can select a source and target color to be defined for up to eight different colors.



Intelligent Sharpening in action



This image shows Selective Color in action. It automatically corrects the distorted sky color



### Intelligent image processing

Multi-Dimensional Processing (MDP) is the secret of Arkitex Enhance IntelliTune's success, and the brains behind the interface. MDP is the culmination of Agfa's experience in analog and digital image capture, photographic and raster image processing, screening technology, color management and image output. MDP analyzes spatial quality and geometry, as well as tonal characteristics and color values. With this information it can identify where sharpening was previously applied, for instance, to prevent excessive sharpening.

### Intelligent tuning

MDP then combines the color, tonal and spatial data to calculate the adjustments needed for optimum image reproduction. By doing so, the integrity of the original image is never sacrificed. For example, it takes previous sharpening and also the image resolution into account and provides a sharpening with a consistent look and feel.

Arkitex Enhance IntelliTune can even be set up to decide on the best settings automatically based on parameters in the EXIF or IPTC image metadata such as ISO speed or whether a flash was used.

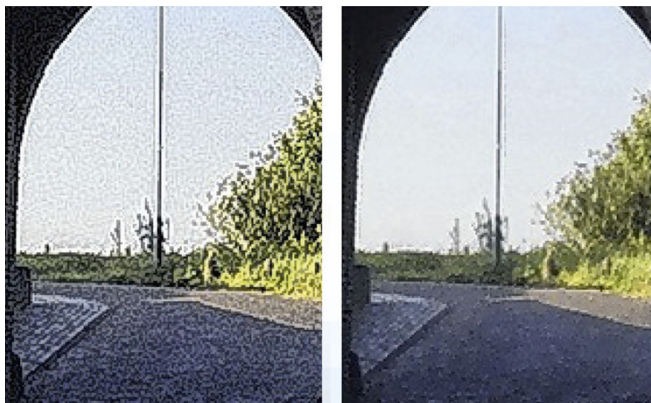
### Intelligent productivity

This feature gives you automated intelligence. You get all the benefits of individual image processing at a speed that surpasses any batch-processing program on the market. There's no need to pre-sort, predefine or pre-batch.

### Intelligent interfacing

Arkitex Enhance IntelliTune offers a large scope of interfacing possibilities. Firstly, there is a tight integration with Arkitex Production workflows. There is an easily scalable configuration facility to allow a wide range of workflows to be constructed easily.

There is also an interface where third-party applications, such as page make-up systems, can send XML commands to perform actions such as cropping, rotation, resizing and running custom scripts automatically. With this, Arkitex Enhance IntelliTune can, for example, provide a seamless integration with page make-up and other third-party systems.



Before/after images showing intelligent noise reduction in action

[www.agfagraphics.com](http://www.agfagraphics.com)