



ADVANTAGE N

The high-quality Advantage N platesetters are designed to give any newspaper printer a competitive edge – from local newspaper printer to high-volume publisher. Choose from different plate-loading mechanisms and throughput speeds to fulfill your requirements. The Advantage N units can image both conventional and chemistry-free plates.



Advanced technology. Many advantages.

The violet-laser Advantage N platesetters for newspaper plate production stand out through their **superior productivity, reliability and ease of use.**

Combining **high-quality standards** with violet-laser imaging technology, Advantage N addresses the needs of large, medium and small-volume printers. It offers you a choice between several plate-loading mechanisms and various plate throughput speeds. For even more processing flexibility, Advantage N units can image both photopolymer chem-based and chemistry-free plates.



The combination of the patented FlexWheel® and FlexPin® components ensures a perfect, fully automatic and format-independent 3-point registration of each plate.

Advantage N is **designed to meet your every need** – whether you are a modest local newspaper printer or the most ambitious high-volume publisher. The series matches every production requirement and accommodates plate sizes ranging from 275 x 451 mm (10.82" x 17.75") to 914 x 710 mm (35.98" x 27.95").

Powerful benefits

- **Violet-laser imaging technology:** to offer you fast and reliable plate making, the means to meet tight deadlines, and the lowest cost of ownership.
- **Short production cycles:** to let you extend editorial and advertising deadlines and deliver the latest news or last-minute offers.
- **Automation:** to yield consistent quality, with fewer remakes and less wasted material.
- **Robust design and fewer moving parts:** to result in minimal maintenance requirements and less downtime.

Superior productivity

Perfect plate transport and handling

The combination of the patented FlexWheel® and FlexPin® components ensures a perfect, fully automatic and format-independent 3-point registration of each plate. The High-Precision Drive System accurately transports the plates under the exposure head while an integrated air bed ensures a smooth, scratch-free process.

For added convenience and carefree operation, air cushions on both sides of the exposure head neutralize any possible external vibration. Consequently, Advantage N units can be installed close to the printing press without the risk of compromising image quality. A patented Slip Sheet Removal System® removes the interleaved paper and drops it into a paper bin.

Absolute integration and ease of use

Using a Gigabit Ethernet connection, the Advantage N integrates into any business network environment as easily as a simple printer. The browser-based User Interface (UI) can reside on any computer in the network and/or on the optional engine display (via a VSN connection).

Using the password-protected UI, operators can access the engine to adjust media settings and control production. Service engineers can download upgrades and perform service remotely. All I/O and motor controls are connected through the latest CAN Bus technology. An EXT industrial single-board controller centralizes all controls on a single PC board, resulting in a fast connection between the different modules, easy diagnostics, fewer spare parts, less cabling, and higher reliability.

Unprecedented automation and productivity

The Advantage N-TR and Advantage N-PL set new standards for newspaper production. With the ability to image up to 1,600 plates continuously at a throughput speed of up to 400 plates per hour, newspaper printers achieve new levels of automation and productivity.

Printers who use different plate formats will benefit from the possibility to add trolleys with the Advantage N-TR. High plate throughput allows you to produce more plates in the same amount of time or meet your peak production in case of tight deadlines. Choosing a system with a higher plate throughput eliminates the need for multiple systems, saving floor space and money.





Optimal reliability

Built-in, fail-safe systems

The highly intelligent Advantage N immediately informs the operator when the engine is about to run out of plates. It also detects damaged plates and forgotten cardboard, and discards them into an integrated dump area (only on the Advantage N-TR model) to avoid any damage to the CtP engine or the online processor.



Advantage N-TR can image up to 1,600 plates continuously at a throughput speed of up to 400 plates per hour, depending on resolution and plate size.

Agfa's patented Arkitek PowerWedge® replaces the analog calibration procedure with a simple digital one, thus eliminating the need to manually check the correct exposure level.

High quality and great stability

Advantage N has an imaging head with a very compact and extremely solid casting house to protect the optics and guarantee high stability. Widely accepted as the industry standard for newspaper plate production, the violet-laser diode combines a lifetime of use with a low cost of ownership.

Agfa's unique 670-nm reference laser beam and grating scale bar continually check the laser position, ensuring absolute exposure linearity. Pulse Width Modulation and Amplitude Modulation adjust the laser settings to image even the finest details, produce the most demanding fonts (e.g. kanji), and ensure perfectly even tints across the entire image.

By default, every Advantage N engine offers resolutions from 900 to 2450 dpi and can image both ABS, Sublima and SPIR@L screening. In combination with the zoomable spot size, this delivers photo-like print quality for all newspaper or semi-commercial applications. As a result, there is no need to invest in additional quality upgrades.



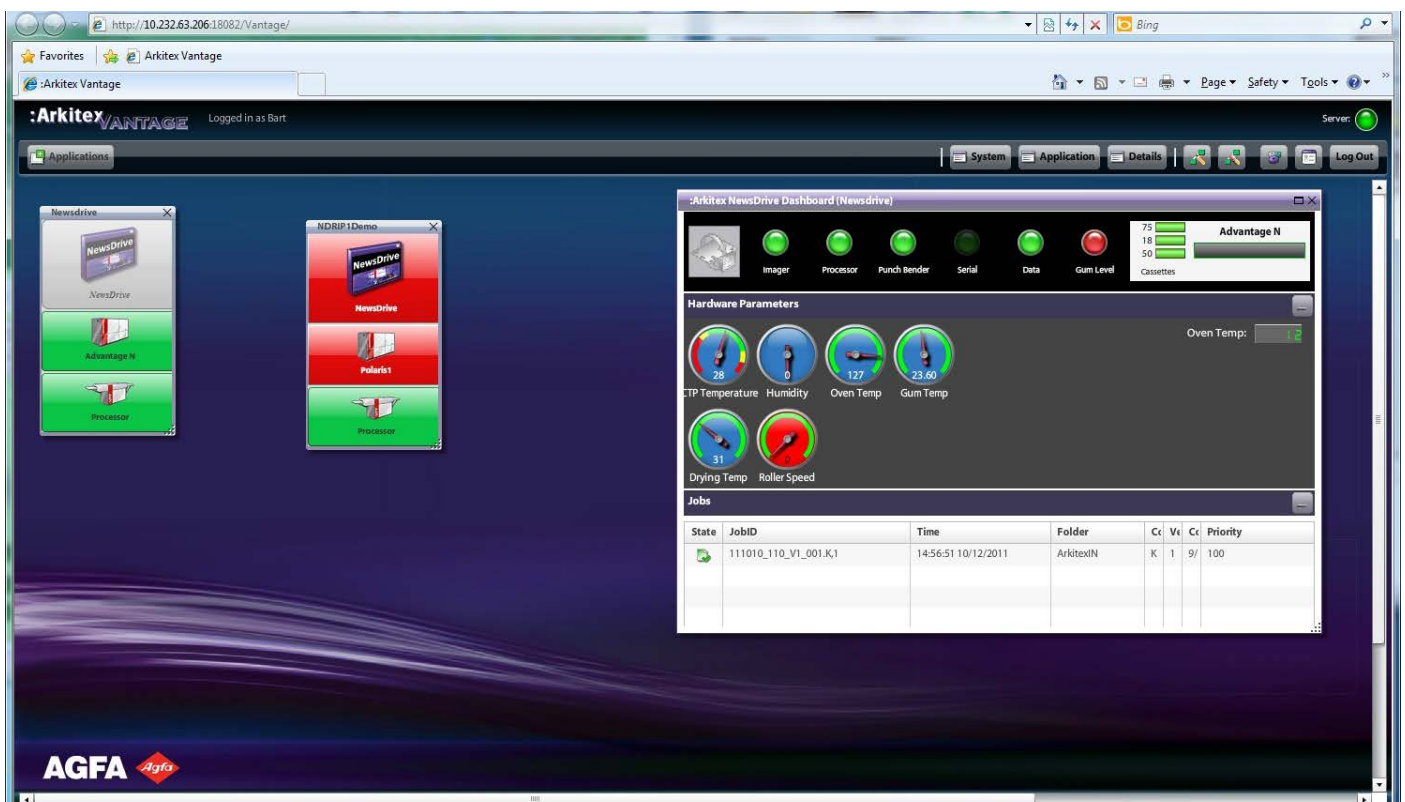
High-standard output quality

Whether you use the Advantage N-SA (semi-automatic) engine or the top-end Advantage N-TR VHS (full-automatic, 400 plates per hour) makes no difference to your output quality. The only differences are the production speed and the degree of automation. Advantage N is built around a modular concept, which means that the imaging part is the same for all units. They all contain the same laser, optics and High-Precision Drive System. This allows you to combine different Advantage N engine types (e.g. for backup reasons) and still be sure of an identical output quality.

Arkitex Enhance Vantage: intelligent enterprise health monitoring

Every Advantage N unit (except for Advantage N-SA) is preconfigured by default to connect to the Agfa Vantage Enterprise Health Monitoring software. Arkitex Enhance Vantage is a simple, one-screen tool that you can use to monitor your entire CtP system: Advantage N, processor/COU, punch and bender, and software. The software tool gives you an early indication of potential issues, which allows you to fix a problem before it becomes critical.

Arkitex Enhance Vantage is a simple one-screen tool that you can use to monitor your entire CtP system.





Infrared camera

An optional infrared camera can be mounted inside the engine's plate transport and imager part. This allows you to monitor what is happening inside the engine during production. It can also be used in combination with Agfa's TeamViewer for remote servicing.

TeamViewer: worldwide remote service and support

TeamViewer automatically sends an alert notification to the Agfa service team without requiring your intervention. This allows rapid service response times and after-hours support capabilities. Via TeamViewer, software updates can be uploaded timely and securely.



Complete plate-making solutions from a single supplier

Agfa is the only manufacturer offering you a total plate-making solution: CtP, plates, processors, clean-out units, workflows and press room chemistry. In this way, our engineers can focus on a seamless integration and optimization of all production components.

ENGINE TYPE	THROUGHPUT SPEED IN PLATES PER HOUR (DEPENDING ON RESOLUTION AND PLATE SIZE)
Advantage N-SA	Up to 75
Advantage N-SL	100
Advantage N TR	100
Advantage N TR S	150
Advantage N TR XT	220
Advantage N TR XXT	300
Advantage N-TR HS	350
Advantage N-TR VHS	400
Advantage N-PL HS	350
Advantage N-PL VHS	400

Advantage N-PL: full CtP autonomy

Taking productivity to a whole new level

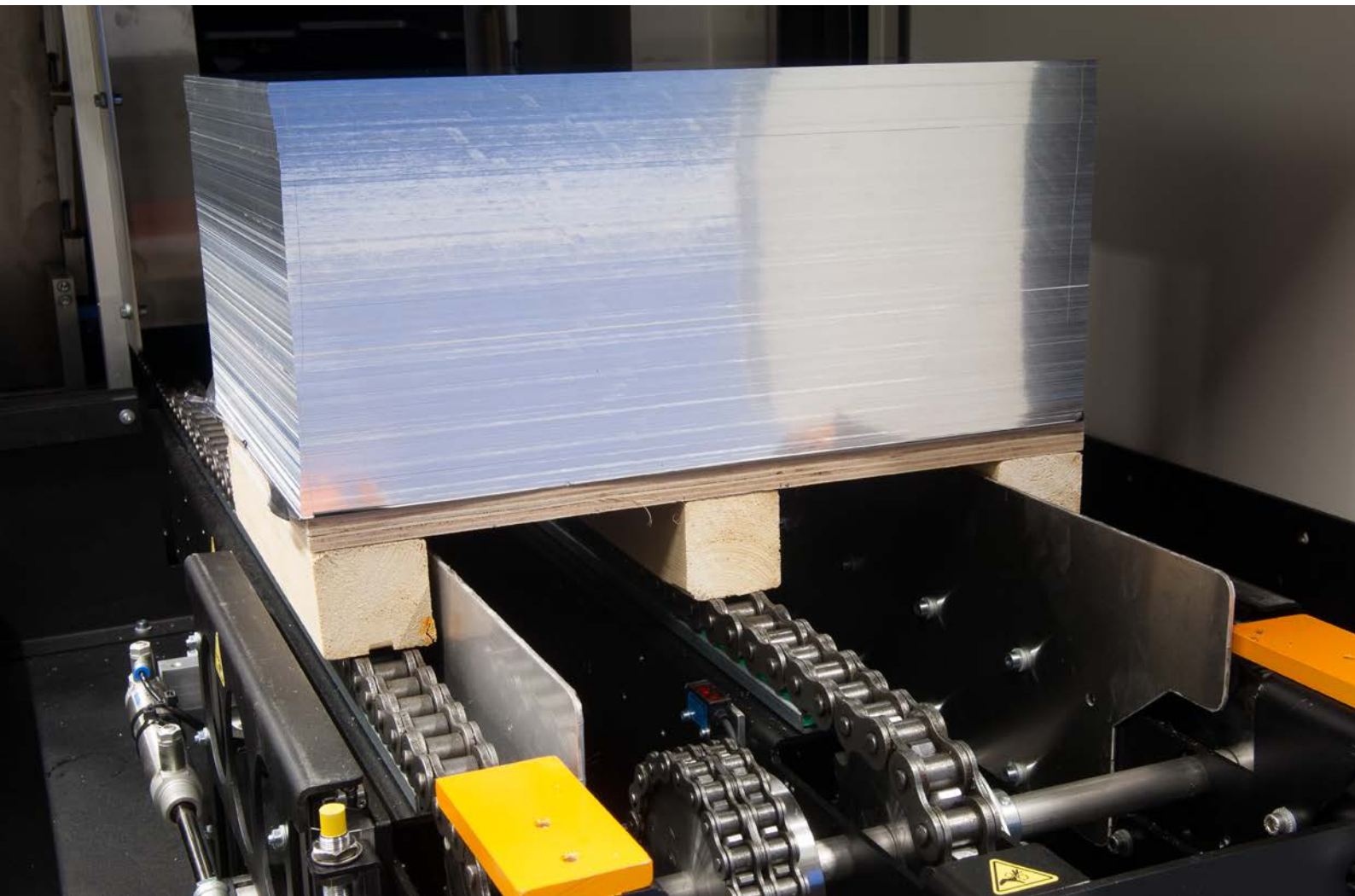
When it comes to productivity and automation, the Advantage N-PL is in a class of its own. It has the ability to image up to 3,100 plates continuously at an impressive throughput speed of up to 400 plates per hour.

Continuous plate production is made possible by the integrated pallet load module of the Advantage N-PL. This module supports two different plate format sizes – single plates and panorama plates – and allows you to have them online simultaneously. It also enables you to load new plates in white light.

Add to that different loading options (i.e. loading through the back or sides), multiple light-protective features, and a pallet transport mechanism adjusted to your plate format, and your entire CtP cycle becomes an easy and highly efficient process. As plates are wrapped in bulk and arrive on pallets, that process also significantly reduces packaging and thus takes a sustainable and ecological approach to plate production. this way, our engineers can focus on a seamless integration and optimization of all production components.

An extra possibility is to combine this exceptional efficiency with other Advantage units, as the pallet load module is also available as an upgrade for Advantage N-TR HS and Advantage N-TR VHS.

The Advantage N-PL can image up to 3,100 plates continuously at an impressive throughput speed of up to 400 plates per hour.



Specifications

ADVANTAGE	ADVANTAGE N-SA		ADVANTAGE N-SL	ADVANTAGE N-TR	ADVANTAGE N-PL
Laser type	Violet-laser diode (405) nm The Advantage N is classified as a laser system class 1 according to standard 60 825-1.				
Recording system	High-precision drive system				
Resolution	900-2540 dpi				
PLATE CHARACTERISTICS					
Maximum (slow scan x fast scan)	1143 mm x 710 mm (45" x 27.95")			914 x 710 mm (35.98" x 27.95")	
Minimum (slow scan x fast scan)	275 mm x 451 mm (10.82" x 17.75")				
Plate thickness	0.20-0.40 mm / 8-16 mil				
Safelight for plate loading	Yellow			Yellow/TR trolley can be transported to the yellow light room	Daylight
Operating safelight	Yellow	Yellow (daylight with optional daylight cover)		Daylight	
PLATE COMPATIBILITY					
Approved plates	Photopolymer (conventional and chem-free) or silver halide				
PLATE LOADING & UNLOADING CONFIGURATION					
Automatic plate loading	Yes				
Automatic slip sheet removal	N/A	Yes			
Online plate capacity	N/A	120	Up to 1,600		Up to 3,100
Plate formats supported	Up to 100				
Plate formats supported online	N/A	1 + manual bypass	1 + 2 optional		1 + 1 optional
Online processor	Yes				
Throughput (depending on resolution and plate size)	75 pph	100 pph	Up to 400 pph		
WEIGHT & DIMENSIONS					
Dimensions (w x l x h) (Standard)	1165 mm (45.87") x 2392 mm (94.17") x 1475 mm (58.07")			1245 mm (49.02") x 3536 mm (139.23") x 1700 mm (66.93")	1245 mm (49.02") x 4100 mm (161.42") x 1680 mm (66.14")
Dimensions (w x l x h) (Extended)	N/A			1245 mm (49.02") x 3950 mm (155.51") x 1700 mm (66.93")	N/A
ENVIRONMENT					
Operating temperature (outside of this range may affect performance)	18-23°C (64.4-73.4°F)				
Humidity range	40% to 60% RH (non-condensing)				
Power	10A 230V (50/60 Hz)				
Air supply	5.5-6.8 bar				
OPTIONS					
Display on pivoting arm	Factory option + field upgradable				
Mirrored registration	Factory option + field upgradable				
Daylight cover	N/A	Factory option + field upgradable		N/A	
Infrared camera					
Vantage	Factory option + field upgradable	Factory built-in			
Productivity upgrades	No			+50/+120/+200 Advantage N-TR HS is by default 350 pph, but upgradable to 400 pph (Advantage N-TR VHS)	Advantage N-PL HS is by default 350 pph, but upgradable to 400 pph (Advantage N-PL VHS)
Additional trolleys	N/A			Yes	N/A

www.agfa.com

© Copyright 2021 by Agfa Offset BV, 2640 Mortsel, Belgium. All rights reserved.

AGFA and the Agfa rhombus are trademarks of Agfa-Gevaert NV, Belgium, or its affiliates. Advantage is a trademark of Agfa Offset BV, Belgium or its affiliates. All other brand and product names may be service marks or trademarks of their respective owners. All product specifications are subject to change without prior notice.

All information contained in this document is intended for guidance purposes only, and specifications are dependent on platesetter, processor and press conditions, and chemistry and inks used.