



**AGFA**  
**RADIOLOGY**  
SOLUTIONS

# FUSE automatic software updates for MUSICA® Workstations

**Fast Update Service (FUSE)™** furthers the commitment of Agfa Radiology Solutions to offering enhanced remote services. Delivering automatic software updates for your **MUSICA® Workstations**, it ensures that you always have access to the latest Microsoft Windows® security patches and updates to specific Agfa software components.

## Ensuring the highest levels of performance and cybersecurity

With just one click, you can ensure that your workstation operates with the latest software, optimizing performance and minimizing downtime.

FUSE™ can also autonomously schedule updates, allowing you to plan installation at your convenience. Installation times are typically short, helping you to get up and running quickly, and maintain productivity.

Additionally, by ensuring your workstations are kept up to date with the highest levels of cybersecurity, FUSE plays a key role in safeguarding your critical systems and data.

## Outbound connection

FUSE™ is a small software component that can be installed on your **MUSICA® Workstation**, enabling it to receive automatic software updates of Agfa software and Microsoft Windows security patches.

To receive the updates, the **MUSICA® Workstation** must have access to the internet or be connected via the Agfa Secure Remote Service System (SRSS). FUSE™ is fully compatible with SRSS.

### Connection pre-requisites

- In all cases, outbound connection must be allowed to an Agfa hosted IP address on Port 443 HTTPS (Hypertext Transfer Protocol Secure) traffic.
- In case of an SRSS connection, the traffic is secured with VPN (Virtual Private Network) and AES-256 (Advanced Encryption Standard with 256-bit keys).

### Data transfer

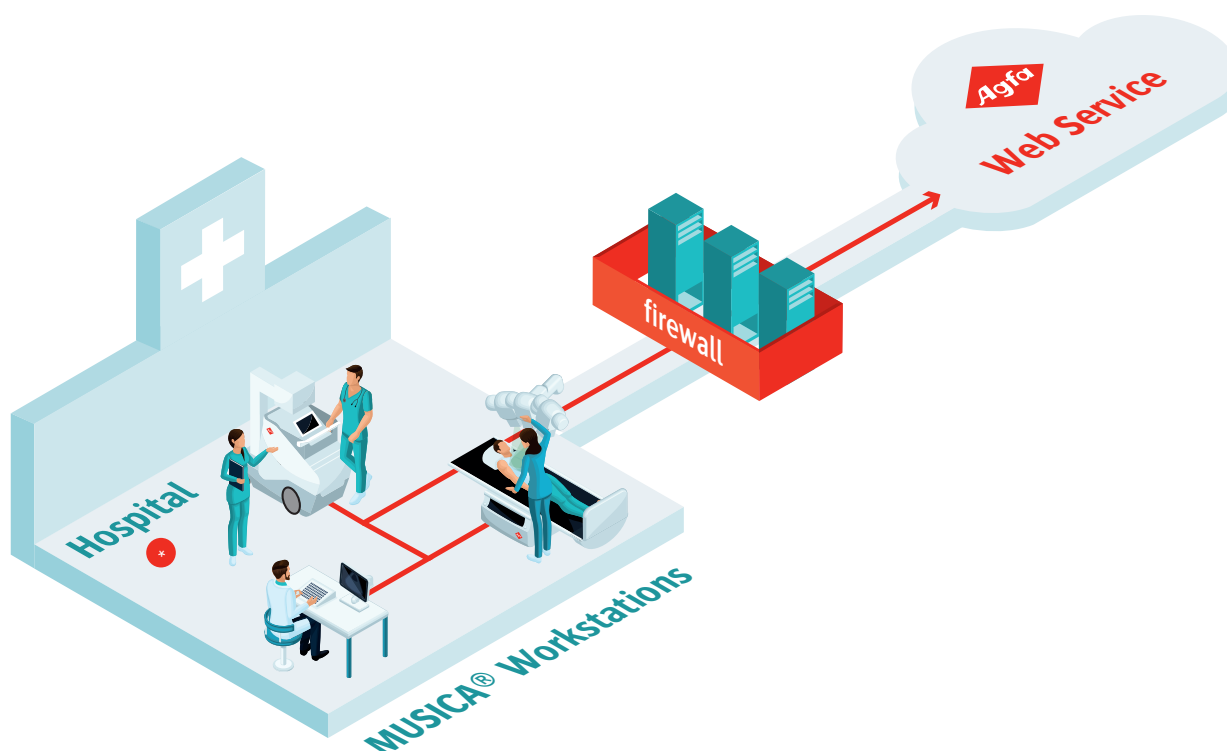
The **MUSICA® Workstation** with the FUSE™ component initiates an outbound connection to Agfa's servers. FUSE™ involves only the

transfer of technical data, i.e., the currently installed Agfa software and Microsoft Windows security patches. No data is transferred or stored by Agfa during this process.

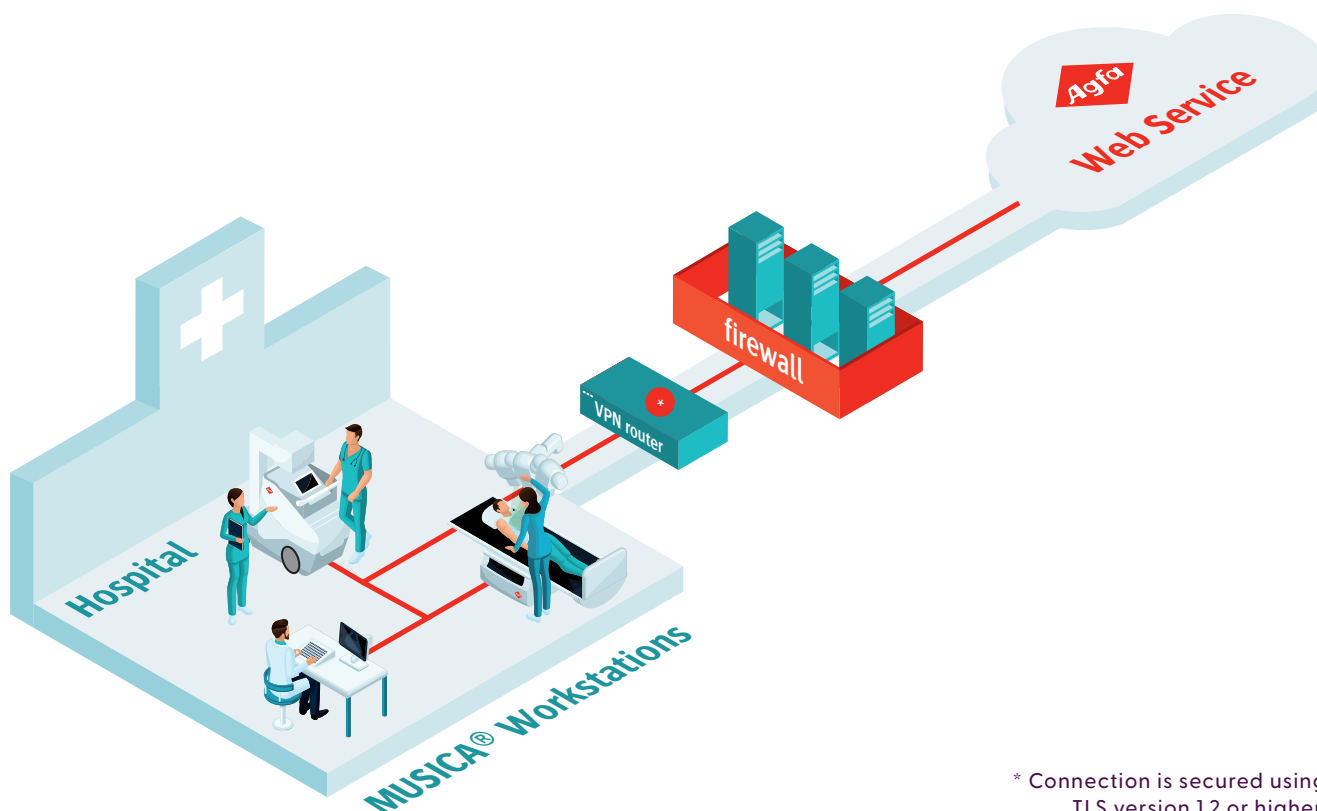
The user always initiates the software update, which only starts after confirmation. No further user interaction is required.

Note that the **MUSICA® Workstation** is unavailable during updates, but installation time is quick and the workstation is up-and-running and ready-to-use quickly.

Direct connection towards Agfa Web Service, no VPN



Direct connection towards Agfa Web Service, VPN required



\* Connection is secured using TLS version 1.2 or higher.

# AGFA RADIOLOGY SOLUTIONS

Follow us:



[agfaradiologysolutions.com](https://www.agfaradiologysolutions.com) » Septestraat 27 - 2640 Mortsel - Belgium

Agfa, the Agfa rhombus and MUSICA® are trademarks of Agfa-Gevaert NV, Belgium, or its affiliates. All rights reserved. All information contained herein is intended for guidance purposes only, and characteristics of the products and services described in this publication can be changed at any time without notice. Products and services may not be available for your local area. Please contact your local sales representative for availability information. Agfa-Gevaert NV diligently strives to provide as accurate information as possible, but shall not be responsible for any typographical error.

© 2025 Agfa NV - All rights reserved - Published by Agfa NV

GB 202503