



**AGFA**  
**RADIOLOGY**  
SOLUTIONS

# CriticalScan: Early warning system for critical pathologies

A ScanXR™ product\*

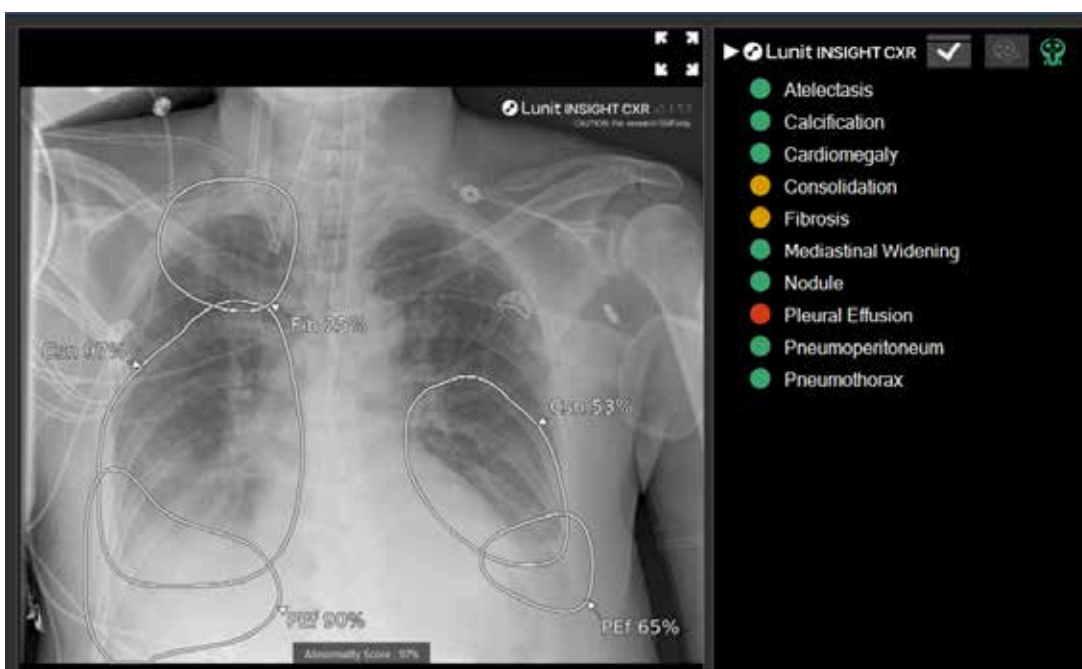
In times of growing healthcare staff shortages, radiology reporting delays tend to increase. Prioritizing the care of patients who are at risk for a life-threatening pathology can make all the difference in ensuring the best outcomes. CriticalScan, a ScanXR™ product embedded in the MUSICA® Workstation, identifies suspected critical pathologies in chest X-rays, and alerts the front-line care team member to urgently follow the local escalation protocol.

CriticalScan provides fast and clear pre-clinical evaluation of chest X-rays at the patient's side and enables fast communication between care teams.

### A safety net for care teams

In a radiology workflow, the radiographer is generally the first healthcare team member to evaluate any X-ray image. CriticalScan leverages this organization to provide hospitals and imaging centers with a tool for easily setting up a Radiographer Abnormality Detection System (RADS). The RADS empowers exam prioritization, and ultimately helps reduce the time for the patient to receive the appropriate treatment.

- The radiographer is notified by CriticalScan of a high-priority exam e.g. showing risk of pleural infusion, tension pneumothorax or lung nodules.
- The radiographer immediately escalates this exam to the radiologist or the referring physician.
- The referring physician or radiologist can review the images on their workstation while the patient is still in the exam room and can request additional exposures if required.



Workstation view after a critical abnormality is suspected.

## Optimizing the patient care pathway with AI

CriticalScan is a silent assistant that doesn't interfere with the normal workflow, unless a critical finding is detected.

And it's an easy way to embed artificial intelligence into your Agfa experience:

- It's transparent for your IT infrastructure.
- Radiographers don't require any special training.
- Results are reproducible, regardless of which radiographer is operating the system.
- You reduce the risk of missed abnormalities.
- The radiology and clinical teams can decide on the AI settings flexibly, for each modality.
- It is compatible with most Agfa X-ray systems, from entry-level computed radiography (CR) to premium direct radiography (DR) rooms.

## Powered by Lunit INSIGHT CXR

With CriticalScan, all chest Posterior Anterior (PA) and Anterior Posterior (AP) are processed via the MUSICA® Workstation, using Lunit INSIGHT CXR.

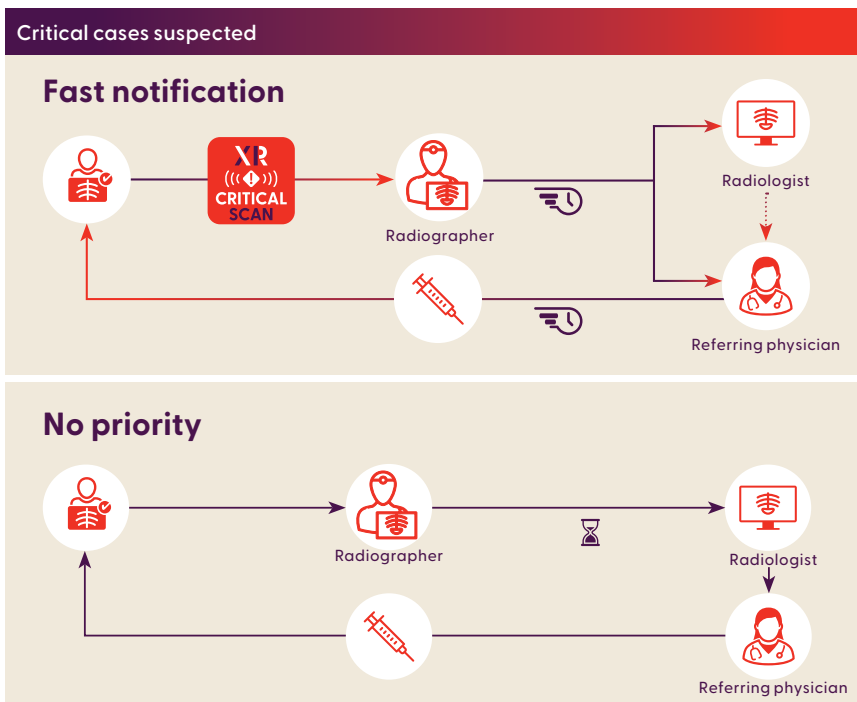
This deep learning-based AI software:

- has been trained on over 250,000 chest X-rays.
- delivers 98.5% accuracy.
- automatically detects and identifies 10 radiology findings, including pneumothorax, pneumoperitoneum, pleural effusion, atelectasis, nodule, consolidation and calcification.



### A ScanXR product\*

CriticalScan is part of the ScanXR™ portfolio of AI-driven tools that are embedded in the MUSICA® Workstation. ScanXR intelligently assists clinicians and radiologists to accelerate the identification and notification of suspected pathologies that tend to be underdiagnosed or that need to be treated immediately.



### About Lunit

Lunit is a deep learning-based medical AI company that develops cutting-edge software for medical data analysis and interpretation. Its focus is on developing AI solutions for precision diagnostics and therapeutics, ensuring the right diagnosis and treatment, at the right cost for each patient. Founded in 2013, Lunit has been acknowledged around the world for its advanced, state-of-the-art technology and its application in medical images.

# AGFA RADIOLOGY SOLUTIONS

\*Not all ScanXR products are available in all regions.

Follow us:



[agfa.com](https://www.agfa.com) » Septestraat 27 - 2640 Mortsel - Belgium

Agfa, the Agfa rhombus, MUSICA and ScanXR are trademarks of Agfa-Gevaert NV, Belgium, or its affiliates. All rights reserved. All information contained herein is intended for guidance purposes only, and characteristics of the products and services described in this publication can be changed at any time without notice. Products and services may not be available for your local area. Please contact your local sales representative for availability information. Agfa-Gevaert NV diligently strives to provide as accurate information as possible, but shall not be responsible for any typographical error.

© 2024 Agfa NV - All rights reserved - Published by Agfa NV

P1931 EN 00202403