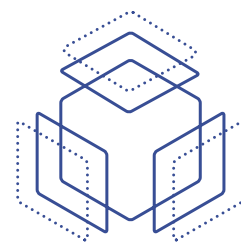




# AGFA HealthCare Enterprise Imaging



Empowering Clinicians and Health Professionals to  
Grow, Work, and Live – In Balance

That's life in **flow.**

**AGFA**   
HealthCare



## Enterprise Imaging Platform

In the dynamic landscape of modern healthcare, health systems are continuously expanding, forming new partnerships, accommodating rising patient volumes and workloads, and embracing innovative technologies. These developments place an unprecedented demand on staff, resources, and infrastructure.

However, amidst these challenges lies an opportunity to reduce complexity, improve clinical collaboration, and enable workflow efficiencies – ultimately paving the way for enhanced operations and superior patient care.

For over 100 years, AGFA has been a respected leader in innovation.

Three decades ago, our IMPAX® PACS revolutionized the management of imaging in care delivery.

Today, the AGFA HealthCare Enterprise Imaging Platform continues to uphold this legacy of pioneering excellence with a solution that not only incorporates cutting-edge technology but also empowers organizations to achieve their goals and unlock their full potential.

### A COMPLETE PICTURE

**AGFA HealthCare Enterprise Imaging (AGFA EI) meets the challenges of today's modern health system with one of the first true medical imaging management platforms.**

With advanced, native diagnostic imaging features combined with intelligent workflow orchestration, AGFA EI provides efficient and accurate image interpretation keeping diagnosticians in the flow and to help them deliver excellent patient care.

Additionally, AGFA EI provides frictionless access to imaging data by seamlessly embedding into an Electronic Health Record (EHR) systems like Epic and Cerner resulting in a comprehensive [Imaging Health Record™](#) (IHR).

With an IHR, Health Professionals across specialties and geographies benefit from access to a comprehensive and historical view of their patients' imaging history – expediting image access while optimizing system efficiency and performance.

### Recognitions and Honors



## Viewing Patients' Imaging Health Record™ in your EHR



### Benefits for Health Professionals

- One view for all patient information – imaging and otherwise
- A linear view of imaging history across modalities
- Streamlined workflows by staying within the system already being used
- Eliminates the need to learn a new software application
- Improves access to longitudinal patient record without the need of multiple viewers



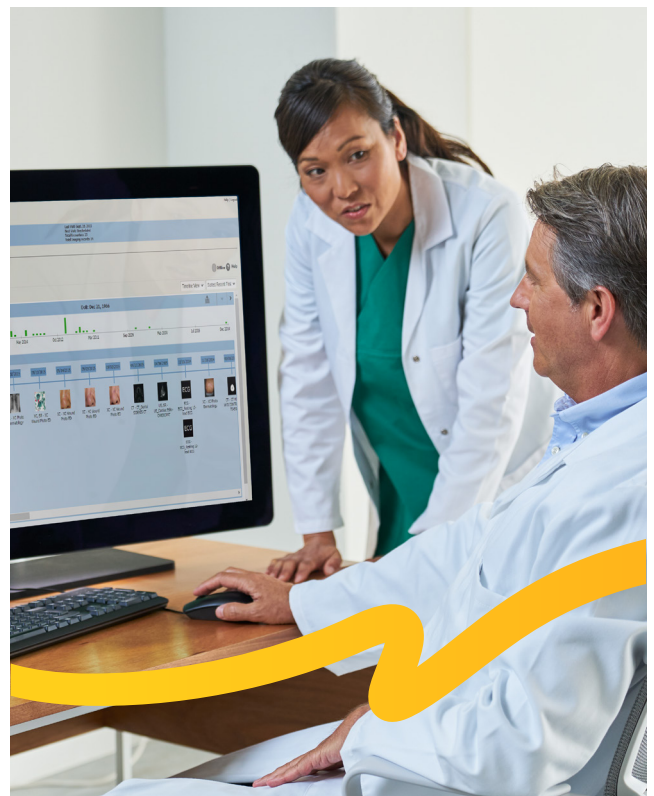
### Benefits for IT Professionals

- Reduced infrastructure and bandwidth needs
- Train, manage, and monitor fewer systems
- Save costs to allocate toward strategic growth initiatives
- Consolidation of platforms reduces security risk/exposure
- Less housekeeping in terms of device-by-device software updates

“It’s really nice for all of our providers to have one system. What we do affects our patients. Being able to make sure that our Radiologists have quick access to those images to be able to provide reads to effect treatment is very satisfying work.”

Jasmine Holloway  
Senior IT Application Analyst  
Sparrow Health System, USA

[Read the Case Study](#)

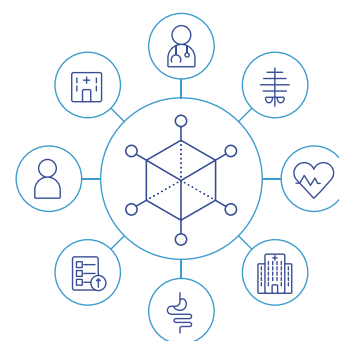


## The Power of an Imaging Health Network™

Bringing together multiple IHRs, AGFA HealthCare Enterprise Imaging enables a community of care through a seamless, and secure [Imaging Health Network™](#) (IHN). Here, information flows effortlessly, enabling every member of your care team to access data regardless of their location or the time of day.

**By providing your team with a comprehensive view of every patient's imaging history, regardless of the provider responsible for it, AGFA EI allows everyone in your health system to concentrate on what matters most: delivering excellent patient care.**

From physicians and radiologists to executives and IT staff, our seamless platform simplifies imaging workflows and liberates your team from the burden of data management.



[Learn More About the IHN](#)

### A Connected Care Community



#### Benefits for Health Professionals

- Tap into resources across specialties, care centers, geographies, and more regardless of software or platform their organization uses
- Connect multiple IHNs to tap into additional enterprises
- Patient information is consolidated for a more longitudinal view
- Maximize resources, regardless of geography, to deliver confident clinical decisions



#### Benefits for IT Professionals

- Reduce cross-system, cross-software complexity via a single, central platform
- Acquire images from newly acquired health systems and/or new affiliations with a few simple clicks
- Make images readily available on workstations and a wide variety of mobile devices
- Reduce security exposure and friction inherent in clinical teams collaborating in disparate systems

“We’ve been with AGFA HealthCare since 2005, so it has been a long journey together. We feel confident that AGFA HealthCare supports us in our ongoing ambition to deliver ‘all care for all patients and all images accessed anywhere.’”

**RJ Merck**  
Radiology IT Supervisor  
Zuckerberg San Francisco General Hospital

[Read the Case Study](#)

## Enterprise Imaging Cloud

### Scale as you go. Experience carefree operations.

Enterprise Imaging Cloud is AGFA HealthCare's SaaS solution that provides seamless updates, effortless scalability, and enhanced security, all while having better cost control, so you can focus on what truly matters – Patient Care.

Enterprise Imaging Cloud gives you all the benefits, capabilities and opportunities of the Enterprise Imaging platform, combined with the advantages of a hands-free fully managed SaaS solution on the Cloud.



[Learn More About Enterprise Imaging Cloud](#)

### Reduce complexity, workload and headaches with Enterprise Imaging Cloud

Unburden your IT operations and enjoy constantly up-to-date solution with Enterprise Imaging, natively deployed on the public cloud as a fully Managed Service.

Deployment, capacity management, performance monitoring, infrastructure security, and data protection - Enterprise Imaging Cloud covers it all.

With our carefree IT operations, you can focus your time and resources on what truly matters – fostering growth, enhancing clinical performance and improving clinician satisfaction, which ultimately leads to a better patient experience.



### Enterprise Imaging Cloud offers to IT Leadership:

We empower you and your IT team to spend less time on low-impact tasks, and more time on achieving your growth objectives. AGFA HealthCare EI Cloud utilizing our cloud-native architecture enables true SaaS and with managed services while delivering capabilities and confidence. Experience a world where technology is not a bother, but a boost.

- Scale on-demand
- Continuous delivery and deployment
- SaaS enabled, fully managed services
- Efficient IT resources management
- Better operating cost control
- Reliability, availability, and resilience
- Managed security
- Maximized performance
- Peace of mind, quick, easy upgrades for always up-to-date software means no risk of falling behind
- Happy, productive clinicians



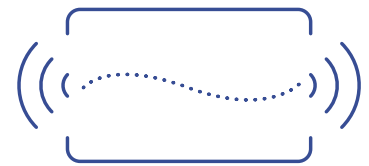
## Enterprise Imaging Streaming Client

### Networked for Connection: Empower your Reading from Anywhere – With Confidence

AGFA HealthCare's Streaming Client is designed to transform the way radiologists and the entire care team work and collaborate, by offering unprecedented freedom and efficiency.

Our Streaming Client uses AGFA HealthCare native, intelligent streaming technology allowing for unifying 'Diagnostic Reading' and 'Universal Viewing' into one single application.

Radiologists can break free from the constraints of traditional reading rooms; the entire care team across the enterprise and beyond can collaborate in one unified environment at the same time granting speed, quality and security.



[More About Streaming](#)

## Blazing-fast Streaming Technology for Peak Efficiency



### Benefits for Health Professionals

- **Blazing-fast access to studies:** Seamlessly access imaging studies without the need to wait for downloads, allowing you to focus on patient care rather than technology.
- **High-quality imaging on a wide variety of compatible devices:** Experience the same high-performance imaging quality typically reserved for high-end clinical machines using a wide variety of compatible devices no matter what device you're using so that you can make confident decisions wherever you are.
- **Real-time collaboration:** Collaborate in real-time with other care team members, breaking down barriers and so that that every decision is informed by the collective expertise of the team.
- **Confidence in image availability:** Trust that AGFA HealthCare Enterprise Imaging will consistently display images from affiliated storage locations within the Imaging Health Network™, so that that you have the information you need.



### Benefits for IT Professionals

- Experience a true **zero-footprint** application – No downloads. No installs. No plugins.
- Significantly **reduce IT infrastructure** demands. Eliminate the need for expensive GPU servers or client-side GPUs, with **CPU-based rendering**.
- Dramatically **reduce IT costs** related to client management, installations, and downloads.
- Elevate IT efficiency by orchestrating centralized configuration for remote affiliated hospitals.
- Simplify application support and maintenance by managing a single unified viewer for both diagnostics and image distribution.
- Free up valuable time for developing **IT strategies** that align with business goals.

## Enterprise Imaging RUBEE® Orchestrator

### Master the Flow: Tailor, Orchestrate, Automate, and Elevate Your Workflows

In addition to the extensive and powerful workflow technologies that are already part of the AGFA HealthCare Enterprise Imaging platform today, AGFA EI will boast an invaluable tool to unlock enhanced efficiency: [Workflow Orchestration](#).

This intuitive system will orchestrate your tasks with smart hanging protocols and tailored workflows that align with your preferences and offer a federated view across multiple locations. With Workflow Orchestration, you will be in the driver's seat, gaining additional control over your work processes. It will empower you to optimize productivity, streamline operations, and devote more time to providing patient care.



[Learn More About RUBEE® Orchestrator](#)

### Intelligent Workflow Orchestration



#### Benefits for Health Professionals

- Evens the distribution of cases among radiologists, helping reduce burnout
- and improving work-life balance.
- Streamlines the workflow by reducing manual tasks, allowing radiologists
- to focus on interpretation and diagnosis with improved efficiency.
- Reduced interruptions, with intelligently populated workflows
- Easy communication and collaboration with other specialists, improving diagnostic confidence.
- Automated case assignment based on subspecialty, availability, and workload, so that radiologists can focus on their areas of expertise.
- Optional AI tools to assist with image analysis and automated triage and orchestration.



#### Benefits for IT Professionals

- Flexibility to create customized orchestration rules by scenario.
- Granular control over logic for continuous optimization.
- Easy-to-learn user interface that delivers autonomy for future enhancements and changes.
- True zero footprint application.
- No downloads. No installs. No plugins.



## Federated Cross-Enterprise Worklist

### Effortlessly unify radiology services across multiple organizations and locations.

AGFA HealthCare's **Cross-Enterprise Worklist**, powered by RUBEE® Orchestrator, consolidates reading across multiple sites and multiple PACS, making it truly universal.

This unique solution unifies streaming, workflow orchestration and federation technologies to create a single, universal worklist across the radiology practices or departments, from which individually tailored task lists can be generated based on certain rules and criteria.

The outcome is a seamless, real-time, cross-organizational reading workflow, that supports providing effortless reading services to contracted healthcare providers independent from their PACS. Furthermore, the solution helps easy accommodation of mergers or acquisitions without the demand of immediate migration.



## 5 Reasons to Implement the Universal Federated Cross-Enterprise Worklist

- 1 Unified:** Access and manage imaging studies from multiple hospital networks and sites through a single, shared, unified worklist.
- 2 Universal:** Easily add new hospital networks and sites with compatibility for third-party PACS, VNAs, and readers, without significant IT infrastructure changes. Beyond Vendor Neutral, a Truly Universal Solution.
- 3 Clientless:** Radiologists can access and interact with the worklist and imaging studies via a web-based interface, eliminating the need for local software installation.
- 4 Blazing fast:** Intelligent streaming technology minimizes storage, bandwidth, and data transfer requirements. Even the largest exams are streamed effortlessly.
- 5 Intelligent:** Smart workflow orchestration optimizes radiologist workloads, helping you meet diverse SLAs effectively.

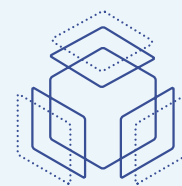




## A Solution That Grows with You

As you scale up to serve more patients, add more providers, and acquire or work with new sites, AGFA HealthCare Enterprise Imaging can grow with you. We're committed to working with you to meet the opportunities and challenges of modern healthcare.

Embrace the power of the Imaging Health Network™, experience the efficiency of Streaming technology, transcending geographical boundaries, and offer seamless access to critical data.



**Enterprise  
Imaging  
Platform**

“The EI platform allows us the tools and mechanisms to communicate better with our colleagues to improve patient care.”

**Jay P. Patel, MD**

Diagnostic Radiologist – Breast and Musculoskeletal Imaging –  
Breast Imaging Section Chief – Quantum Radiology  
Wellstar Health System

[Read the Case Study](#)

“AGFA HealthCare’s solution really led from the front, and the digital ecosystem they brought together will deliver the experience, knowledge and innovation needed to create a complete cloud-based solution which covers the entire end-to-end patient pathway.”

**Pete Winchester,**  
UK Managing Director  
Alliance Medical

[Read More](#)

“With AGFA HealthCare Enterprise Imaging for Cardiology everything that I need is in one place. That’s really efficient and helpful.”

**Bradford J. Chu**  
Medical Director of Echocardiography  
The Children’s Heart Clinic,  
Children’s Hospital of Minnesota

[Watch Customer testimonial](#)

# Are you prepared to streamline workflows and amplify your team's efficiency?

**Take the first step toward revolutionizing your healthcare journey with AGFA HealthCare Enterprise Imaging.**

We can't wait to team up with you.

Get in Touch



**Enterprise  
Imaging  
Platform**

**AGFA**   
HealthCare

AGFA and the Agfa rhombus are registered trademarks of Agfa-Gevaert N.V. Belgium or its affiliates. IMPAX and RUBEE are registered trademarks and Imaging Health Network and Imaging Health Record are trademarks of AGFA HealthCare N.V. or its affiliates. All rights reserved. All information contained herein is intended for guidance purposes only, and characteristics of the products and services described in this publication can be changed at any time without notice. Products and services may not be available for your local area. Please contact your local sales representative for availability information. AGFA HealthCare diligently strives to provide as accurate information as possible but shall not be responsible for any typographical error.