

Precision Reporting in Enterprise Imaging

Structured reporting that supports clear communication
and enhances diagnostic decision-making.

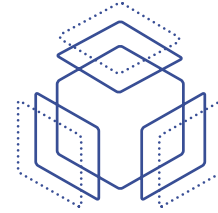
That's life in **flow**.

AGFA 
HealthCare

Structured reporting that supports clear communication and enhances diagnostic decision-making

Reporting is both a critical and time-consuming part of the imaging workflow. The report has to provide clear, meaningful diagnostic information to the reader – the clinician or referring physician. It also must be available quickly – which means report creation has to be smooth and efficient for the diagnostician.

The Precision Reporting module ticks all the boxes. Fully integrated in your Enterprise Imaging platform, it combines customization with automation, to support increased productivity and enhanced physician satisfaction.



**Enterprise
Imaging
Platform**

Standardized, consistent reporting of imaging findings

Precision Reporting is a reporting framework in the Enterprise Imaging platform that guides the user through content, diagrams and graphs, annotations and more, to create high-quality, consistent reports. It enables any radiologist to provide reporting on imaging findings using standardized terminology, assessment structure, and classification for reporting and data collection, as defined by the national and international guidelines. In addition to the pre-defined report templates based on ACR BI-RADS® ATLAS*, ACR PI-RADS® ATLAS* and OB-GYN Atlas guidelines, you can build custom Precision Reporting templates, to meet the specific needs of your stakeholders.

* A registered trademark of American College of Radiology. All Rights Reserved.

A reporting framework for

- Increased productivity
- Consistent, high-quality reports
- Easier case and outcome comparison
- Improved follow-up
- Enhanced collection and availability of data for research



Quality reporting comes standard

By standardizing report creation, Precision Reporting improves the overall level of report quality. Interactive components eliminate manual input and calculations, increasing productivity and accuracy. The consistent terminology ensures everyone is speaking the same language.

A structured framework for template customization

With Precision Reporting, reports are created using either customized or pre-defined templates. The templates include components that make it easy and fast to input accurate data, such as:

- Interactive images, for easy annotations
- Calculated fields, for efficient data entry
- Fields with conditional logic for additional guidance
- Data fetched from external sources
- Various graphics and diagrams
- Screenshot drag-and-drop
- Automatic inclusion of prior results, showing trends

These components help standardize report input and facilitate consistent data entry, to enable structured analysis of body part-related findings.

The screenshot displays a multi-step data entry interface. At the top, a 'Type' dropdown menu is set to 'Mass', with other options like 'Distortion', 'Asymmetry', 'Calcification', and 'Other' visible. Below this, fields for 'Laterality' (Right), 'Clock face' (1-2), 'Quadrant' (Nipple), and 'Depth' (Anterior) are shown. A 'To nipple (cm)' input field is present. An 'Associated features' section includes checkboxes for 'Skin retraction', 'Nipple retraction', 'Skin thickening', 'Trabecular thickening', 'Axillary adenopathy', and 'Calcifications'. A main data entry window titled 'Lesion 1 - PI-RAD 3 | Base - Left - CZ | 9 mm³' contains dropdowns for 'PI-RAD' (3), 'T2', 'DWI' (2), and 'DCE'. It also includes fields for 'Level', 'Base', 'Volume (mm³)' (9), 'Width (mm)' (4), and 'Depth (mm)' (5). A 'Zone' dropdown is set to 'CZ', with a list of zones (AFS, CZ, PZa, PZpl, PZpm, IZA, IZp) shown below. A 'BI-RADS® Scores' section has two rows: 'Right' with a score of 2 selected, and 'Left' with a score of 0 selected. A 'Breast composition' section has four radio button options, with the third option, 'The breasts are heterogeneously dense, which may obscure small masses', selected.

Templates can be customized to match your specific needs

AGFA HealthCare's professional services can support you to produce custom templates that match specific needs. Data for your report can be fetched from external sources, or manually input. The custom templates can include tools from the structured framework, such as interactive images that enable easy annotation, calculated fields for efficient user data entry, fields with conditional logic, and measurements that can be plotted in a graph to show trends.

Custom templates also make it easy to review the patient's historical report data, compare it to current results, and even have it automatically included into a follow-up report.

Clear communication enhances diagnostic decision-making

With Precision Reporting, diagnosticians can translate imaging findings into clear, usable diagnostic information.

In the standardized format, clinicians and referring physician always know just where to look for the information they need. And by adding graphics and diagrams, it is even easier for clinician colleagues to comprehend the key information at a glance.

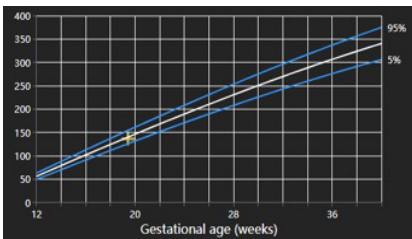
Pre-defined templates for breast, prostate and fetal imaging

Enterprise Imaging Precision Reporting includes pre-defined templates for the specialties of breast imaging, prostate imaging and fetal imaging. This standard templates contain predefined graphics and fields, enabling automated and manual data input in a structured way, in accordance with the Atlas guidelines for ACR BI-RADS® ATLAS*, ACR PI-RADS® ATLAS* or OB-GYN.

OB-GYN

(Fetal – Reporting and Data System)

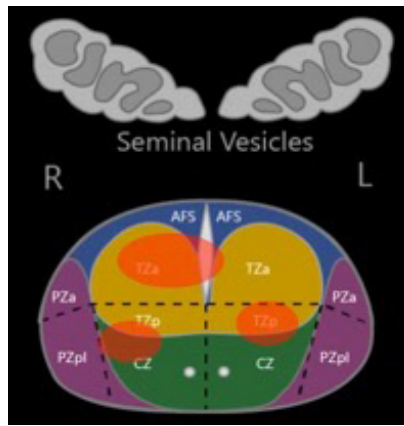
To help evaluate a baby’s growth and development, monitor the pregnancy, and spot developmental issues.



PI-RADS® ATLAS*

(Prostate Imaging - Reporting and Data System)

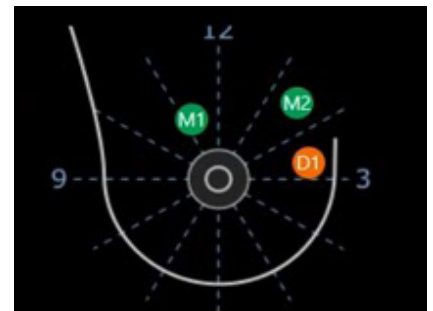
To help improve early diagnosis of clinically significant prostate cancer, reducing unnecessary biopsies and treatment for benign and sub-clinical diseases.



BI-RADS® ATLAS*

(Breast Imaging - Reporting and Data System)

For clear and consistent mammography results communication, easier collaboration across hospitals, and support for scientific research.



* A registered trademark of American College of Radiology. All Rights Reserved.

“The final result is a rendered report, and includes the images and results, making it easy to communicate the findings to peers and referring physicians in a clear and consistent way. The standardized reporting also simplifies communication and collaboration across different hospitals, and facilitates scientific research.”



To learn how AGFA HealthCare can be your partner in Enterprise Imaging Precision Reporting, contact your Client Executive

or email enterpriseimaging@agfa.com



**Enterprise
Imaging
Platform**

AGFA 
HealthCare

AGFA, the AGFA rhombus, and the AGFA HealthCare logo are trademarks of Agfa-Gevaert N.V., Belgium, or its affiliates. The Enterprise Imaging Platform logo, GRIP, GRIP Services, Imaging Health Network, Imaging Health Record, IMPAX, RUBEE, That's life in flow, XERO, and XERO Viewer are trademarks of AGFA HealthCare N.V., Belgium or its affiliates. All rights reserved. All other trademarks are held by their respective owners and are used in an editorial fashion with no intention of infringement. The data in this publication are for illustration purposes only and do not necessarily represent standards or specifications that must be met by AGFA HealthCare. All information contained herein is intended for guidance purposes only, and characteristics of the products and services described in this publication can be changed at any time without notice. Products and services may not be available for your local area. Please contact your local sales representative for availability information. AGFA HealthCare diligently strives to provide as accurate information as possible but shall not be responsible for any typographical error.