

# **Laptop as mobile hotspot (DR 10s, DR 14s)**

---

## **User Manual**

# Configuration

---

Mobile DR and Ultra Mobile DR applications contain a wireless DR detector and a portable MUSICA Acquisition workstation and provide wireless communication between the detector and the workstation and between the workstation and the hospital network.

Depending on the configuration, user interaction is required to manage the network connections.

In a Mobile DR configuration, the MUSICA Acquisition workstation is deployed on a laptop PC.

In an Ultra Mobile DR configuration, the MUSICA Acquisition workstation is deployed on a tablet PC.

Refer to the user documentation of the DR detector for safety directions, intended use and general operating instructions.

# Wireless hospital network - workstation as hotspot

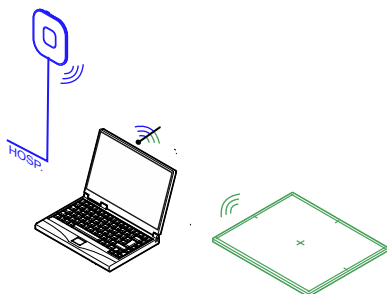
---

DR detectors:

- DR 10s, DR 14s

Only for Windows 10.

The workstation communicates to the detector and to the wireless hospital network via the internal wifi adapter. The workstation is configured to act as a hotspot. Both connections can be active simultaneously.



**Figure 1: Wireless connection to detector and hospital network**

Optionally, wired connection to the hospital network is also supported.

To control the wireless network connections, use the **Mobile Hotspot Utility**. Do not use the Windows wifi settings!

## Topics:

- *Using the Mobile Hotspot Utility to control the wireless network connections*
- *Problem: DR detector is moved out of range of the mobile hotspot*
- *Problem: activating only one wireless connection is not possible anymore*

## Using the Mobile Hotspot Utility to control the wireless network connections

---

The NX workstation can be configured to use a wireless DR detector and to connect to a wireless hospital network. By default, both connections are activated simultaneously.

The user can manually activate or deactivate the wireless connection to the hospital network and the wireless connection to the DR detector. If the quality

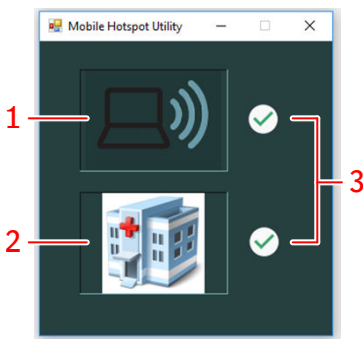
of one of both connections is poor, it may help to temporarily deactivate the other connection while it's not needed. If a connection cannot be established, it may help to deactivate it and then activate it again.

To control the wireless networks:

1. Press the Windows key to display the taskbar and click the **Mobile Hotspot Utility**.

The utility is started automatically during the startup of the PC and always running in the background.

A window is displayed indicating which network is currently active.



1. **Mobile hotspot.** If the mobile hotspot is active, a DR detector can connect to the NX workstation and be used to make exposures. Note that this icon does not indicate if a connection to a DR detector is active, but merely if the mobile hotspot is active.
2. **Hospital network.** The NX workstation must be connected to the hospital network to retrieve data from the RIS or to print or archive images.
3. Icon indicating if the network is activated.

**Figure 2: Mobile Hotspot Utility**

2. Press the icon representing the network to activate or deactivate it. After changing the state of a network, there's a small delay of 3 seconds before another state change can be performed. The reconnecting of the DR detector may take up to 85 seconds.

## **Problem: DR detector is moved out of range of the mobile hotspot**

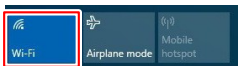
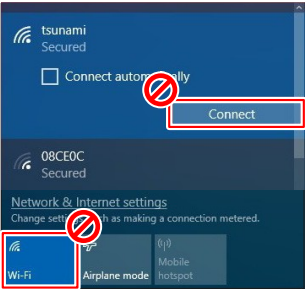

---

If the DR detector is moved out of range of the mobile hotspot, the connection is lost. The DR detector will automatically reconnect when it returns within the range of the mobile hotspot. The reconnecting of the DR detector may take up to 85 seconds.

If the connection is not automatically restored, use the **Mobile Hotspot Utility** to deactivate the mobile hotspot, wait a couple of seconds, and activate it again.

The normal range of the mobile hotspot is 6 m. Walls and doors with or without lead protection will reduce the range of the mobile hotspot.

## Problem: activating only one wireless connection is not possible anymore

Details	In the <b>Mobile Hotspot Utility</b> the wireless connections to the DR detector and to the hospital network are either both active or both deactivated. Activating only one connection is not possible anymore.
Cause	This behaviour is caused by using the Windows wifi settings to control the wireless network connections.
Brief Solution	<ol style="list-style-type: none"><li>1. Check the Windows action center. If the wifi button is not active, activate it again. </li><li>2. Reboot the PC.</li><li>3. To control the wireless network connections, do not use the Windows wifi settings!  To control the wireless network connections, use the <b>Mobile Hotspot Utility</b>. </li></ol>

### Related Links

[Using the Mobile Hotspot Utility to control the wireless network connections](#) on page 3

