

Network Toggler

User Manual

Configuration

A DR detector exchanges data with the NX workstation via a wireless network. An access point is connected to the NX workstation. The NX workstation exchanges data with a.o. RIS and PACS systems via the hospital network.

If hospital network security rules don't allow a device that is connected to the hospital network to connect to third party networks, the **Network Toggler** is used to toggle between the hospital network and the DR detector network to avoid both networks to be active simultaneously.

Refer to the user documentation of the DR detector for safety directions, intended use and general operating instructions.

Network Toggler for hospital network and wireless DR detector network

DR detectors:

- DR 10s, DR 14s
- DX-D 30G, DX-D 30C, DX-D 35C

Only for Windows 10.

The workstation communicates to the detector via a wireless access point. The workstation communicates to the hospital network via a wired or wireless network connection.

If both networks must not be active simultaneously, use the **Network Toggler** to toggle between both networks. The **Network Toggler** connects either the hospital network or the wireless access point.

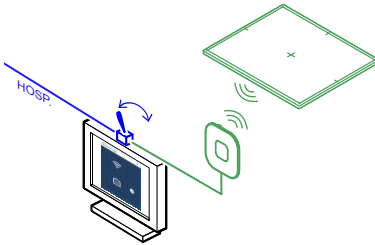


Figure 1: Wired hospital network

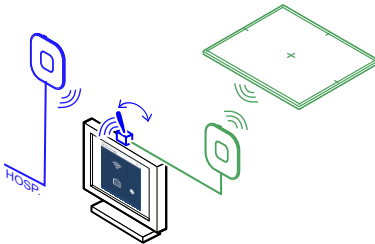


Figure 2: Wireless hospital network

Topics:

- *Using the Network Toggler to control the network connections*
- *Performing an exposure*

Using the Network Toggler to control the network connections

The NX workstation can be configured to use a wireless DR Detector and to connect to a wired hospital network.

If both networks must not be active simultaneously, the **Network Toggler** is used to toggle between both networks.

1. Press the **Toggler** button in the NX software.

The name and location of the button depends on the configuration.



Figure 3: Action button to switch between wireless networks

A dialog is displayed indicating which network is currently active.

2. Press the icon representing the other network to activate it.

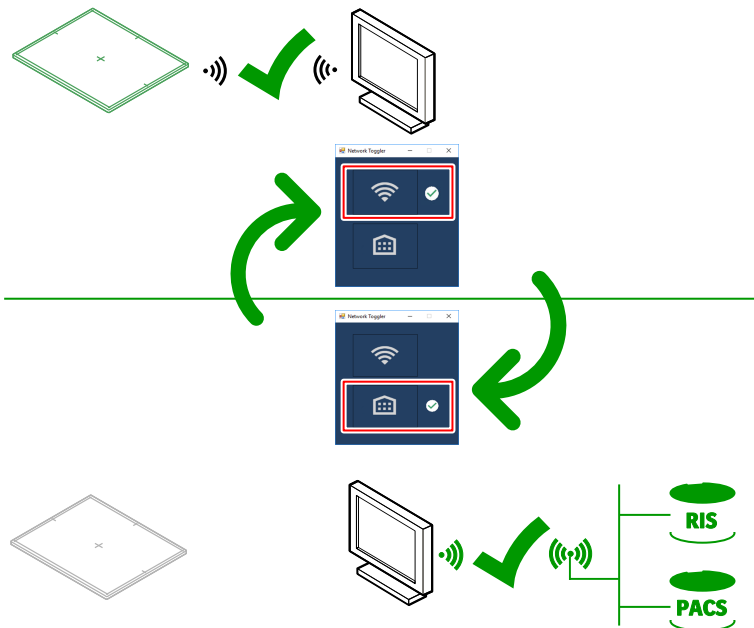


Figure 4: Switching between the two network connections

3. Do not close the **Network Toggler** window!

The **Network Toggler** window will be hidden by clicking in the NX software.

Performing an exposure

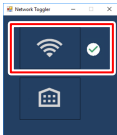
1. Use the **Network Toggler** to activate the connection to the hospital network.



The NX workstation is connected to the hospital network to retrieve data from the RIS or to print or archive images.

No communication to the DR detector is possible, no exposures can be performed.

2. Retrieve the patient info.
3. Use the **Network Toggler** to activate the connection to the DR detector.



The DR detector will connect to the NX workstation. It may take up to one minute for the DR detector status icon on the **DR Detector Switch** to indicate that the DR detector is ready.

The NX workstation is connected to the DR detector to make exposures.

No communication to the hospital network is possible, e.g. to RIS or PACS.

4. Execute the exposure.
If all images in the examination are OK, click **Close and Send All**.
The images are stored on the NX workstation and jobs for sending the images to a hardcopy printer and/or PACS are stored on the queue.
5. Use the **Network Toggler** to activate the connection to the hospital network.



6. The jobs on the queue are processed when the connection to the hospital network becomes available.