



Enterprise Imaging for Cardiology

A consolidated platform for a strong,
unified Cardiology ecosystem

AGFA 
HealthCare

Enterprise Imaging for Cardiology





Enterprise Imaging offers you a converged solution with powerful advanced analysis tools that enhance efficiency and productivity across the department, and beyond

How does Enterprise Imaging enable you to increase Cardiology's performance? By answering the evolving needs of the cardiology department and professionals: for consolidation, productivity, quality of care, communication and reporting.

Medical and technical advances have produced an ever-expanding array of information that is key to ensuring proper diagnosis and treatment. The Enterprise Imaging for Cardiology platform puts it all at your fingertips: exam results, patient history, images, advanced imaging tools, collaboration, reporting and more.

Whether for a single department or a multi-facility network, everything comes together in a single workspace. Powerful analytic tools and rules-based workflows enhance efficiency within the department – while communication and reporting enable you to reach out, into the broader medical environment, to enhance the value of your contribution.

Much more than just 'the next PACS', Enterprise Imaging for Cardiology is an entirely new platform, offering a distinct approach to image and information management. The result is your unified cardiology ecosystem. Cohesive, powerful, seamless, collaborative, and designed to take Cardiology into the future.



CREATING A UNIFIED CARDIOLOGY ECOSYSTEM

How does the consolidated Enterprise Imaging platform:

- Enable you to access the patient's complete cardio-vascular record from a single point?
- Acquire images and data from the different modalities, devices, rooms and procedures used by cardiology?
- Let you pre-populate data from modalities and devices directly and automatically into clinical reports and the EHR?
- Balance the imaging and reporting workloads of the entire cardiology department intelligently, to enable an efficient and pleasant workflow?

AN EXTENDED IMAGING ECOSYSTEM, ACCESSIBLE FROM A SINGLE WORKSPACE

Enterprise Imaging for Cardiology is a completely unified imaging platform that includes PACS, reporting, advanced image processing and integration of clinical information. Rather than a set of disparate, poorly integrated systems, your cardiology department benefits from a strong, unified solution with the tools you need for an efficient workflow and confident diagnosis.

A seamless and efficient workflow

Enterprise Imaging for Cardiology extends your imaging ecosystem, and integrates the entire cardiology service line in a single workspace. At the same time, it adapts to your team's way of working, creating the right fit to your situation.

Cardiologists no longer lose time and effort switching from one system to another to complete their work: everything they need is easily accessible in one place.

Balanced workloads, enhancing staff productivity and satisfaction

Well-balanced workloads prioritize tasks according to the determined rules, while cardiologists and staff are confident that they can work in an efficient and productive way. It's easy to keep track of uncompleted tasks for each person and each study. Specialists receive the right tasks, steps don't get overlooked, staff doesn't get overloaded, and collaboration is enhanced.

Fast and intuitive to learn and use

Intuitive and (whenever possible) automated tools are very comfortable for all users. Easy to learn, they are quickly adopted, for a faster transformation to Enterprise Imaging.



Features that make the difference

Consolidated environment:

- Enterprise Imaging integrates the entire cardiology service line in a single system.
- It acquires data from different modalities and systems, such as the cath lab, the cardiovascular ultrasound lab, nuclear medicine, the cardiac CT/MRI, Stress / Holter and ECG's enables seamless access to all the captured information. Captured information can be automatically populated in structured reports.
- Third-party integrations make the most of the advanced solutions that are available.

Streamlined workflow:

- Enterprise Imaging's customizable, transparent and agile workflow





MEASURING AND MANAGING PRODUCTIVITY

How does the consolidated Enterprise Imaging platform let you:

- Perform statistics and optimize the performance of the cardiology department?
- Review volume acquisition and then post-process the data?
- Offer quick access to complete patient data, even on mobile devices, so colleagues 'on the move' don't lose any productivity?

ENHANCED PRODUCTIVITY THAT ENABLES PATIENT CARE

Enterprise Imaging includes a range of tools and functionalities that enable you to improve efficiency in the cardiology department in multiple ways. At the departmental, team and individual levels, you can enhance clinical productivity and operational quality.

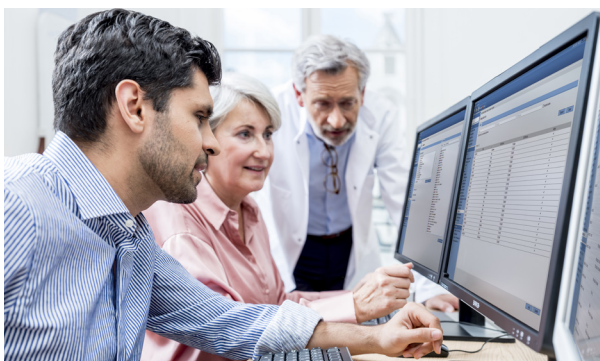
Get insight you can act on

Enterprise Imaging for Cardiology can help you get the most out of your department's resources, by enabling you to track and benchmark performance. With this key information at your fingertips, you can make more informed decisions and optimize resource allocation.

A fast, smooth workflow for cardiologists

Productivity on the individual level is also enhanced, by providing volume acquisition and post-processing tools for cardiologists on their personal workspaces. No need to switch from one workspace or system to another: everything is available in a few clicks, speeding up the process.

Even colleagues 'on the go' can stay productive: able to view, review and finalize reports, anywhere, anytime. You also support sharing and collaboration, for improved clinical confidence.



Features that make the difference

Streamlined workflow:

- Enterprise Imaging's customizable, transparent and agile workflow organizes work around the clinicians' tasks, and in the way they prefer.

Tools for volume acquisition and post-processing:

- Enterprise Imaging provides vendor-neutral, advanced tools to review, modify and perform post-processing functions and measurements for cardiovascular procedures.

Mobile access:

- A mobile, 'lightweight' client lets users access reports and images at any location, from their mobile device.

Business Intelligence & Analytics:

- Dashboards display a variety of reports with meaningful and actionable data.
- Can be enriched by access to key performance indicators such as: number of procedures per day, per clinician, turnover times and more.

Registry support:

- The platform offers registries support including tracking of missing or inconsistent data, for a cleaner database with viable statistics.
- Feeding the correct data into the appropriate templates helps comply with regulation and correct reimbursement.



ENHANCING QUALITY OF CARE

How does Enterprise Imaging enable you to:

- Improve quality of care by interacting with and focusing on the patient – not the technology – even in stressful or emergency situations?
- Easily produce systematic, template-based documents with the complete information needed for quality care?

POWERFUL PLATFORM, SIMPLE USE

With Enterprise Imaging for Cardiology, you can easily access the tools you need to add value to the patient's care, even when you need to act fast. You and your colleagues have easy access to a powerful platform for collecting, analyzing and sharing the information needed for informed decision-making.

Patient-centric imaging vision

Enterprise Imaging for Cardiology offers you a true vision of the entire medical record and patient history, right at your fingertips, even on mobile devices. The ease of use lets you focus your attention on the patient and on the procedure, not on how to use the technology. Tools enabling true collaboration enhance your ability to make informed decisions about the patient's care.

Complete, correct data

Templates, pre-set fields and automated data entry help you reduce the risk of errors or omissions, so you can be confident you are compiling a set of information for excellent patient care and compliance with registries and standards. All data becomes minable, supporting a continuous improvement loop.



Features that support delivering quality of care

Advanced usability:

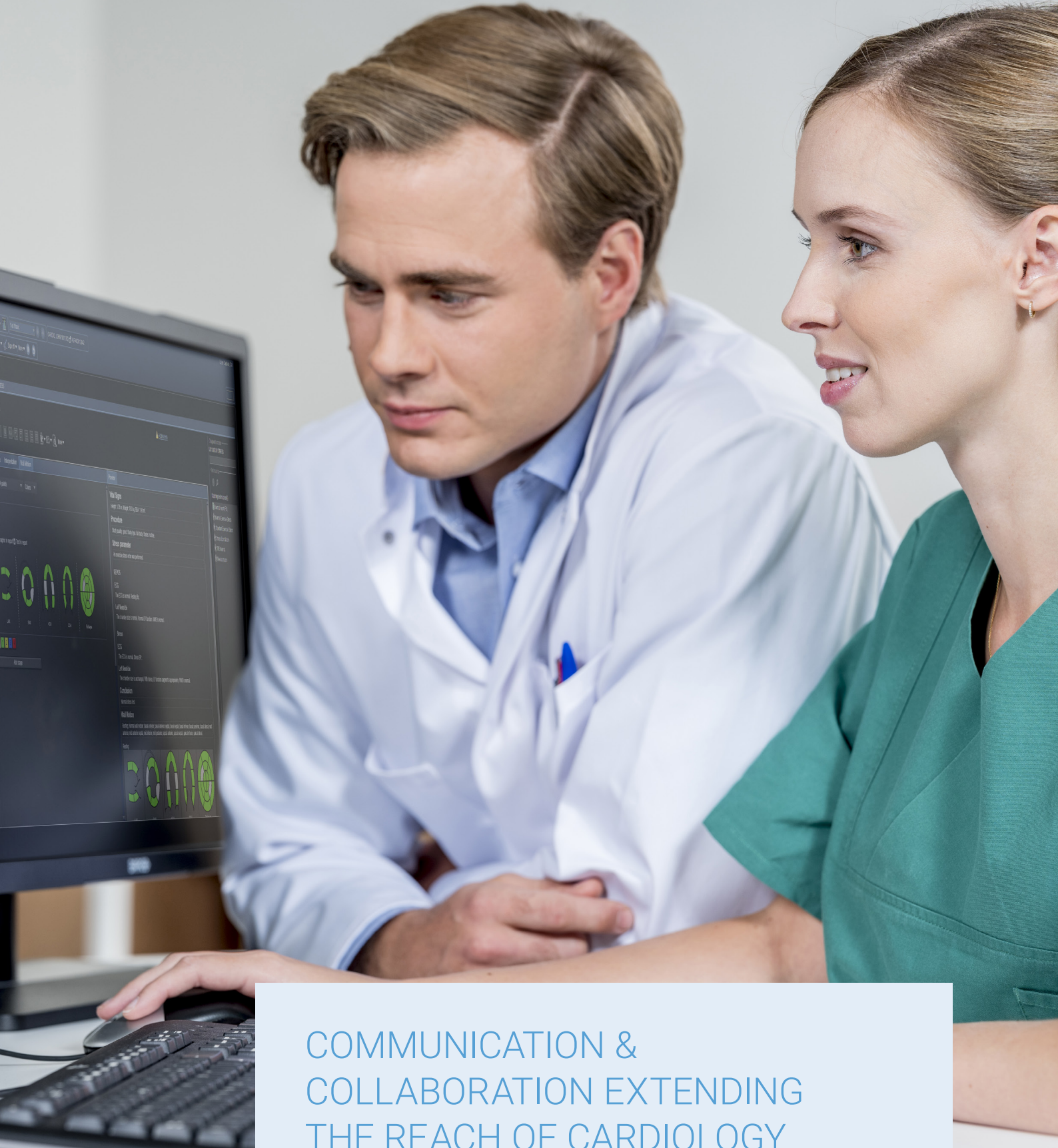
- Extensive experience in high-quality integrations has been used to develop a highly usable and simplified user interface with:
 - fewer buttons
 - no filters, complex data entry or worklists.
- All complexity is handled in the background.
- The platform supports an encounter-based workflow, with barcode scanning.

Automated data entry:

- Pre-set fields in the reports help avoid fundamental information from being missed.
- Documentation automatically provides measurements and drawings, including the coronary tree, and supports you to comply with local standards.

Collaboration and communication:

- Collaboration, chat and sharing functions make it easy to communicate with peers, referring physicians and other stakeholders across departments, hospitals or regions.



COMMUNICATION & COLLABORATION EXTENDING THE REACH OF CARDIOLOGY

How does Enterprise Imaging let you:

- Share information and communicate with your teams throughout the hospital network?
- Distribute your studies to the referring physician, including the report?
- Exchange results with the EHR, via a solution that drives your department's workflow?
- Compile relevant clinical content for research and teaching purposes?

SHARING AND EXCHANGING DATA AND INSIGHT TO IMPACT PATIENT CARE

Informed diagnosis and treatment decision-making require the right data and the right insight. With Enterprise Imaging for Cardiology, you have the tools you need to make sure that cardiology provides both: data and reports get to the people who need them, while collaboration and exchange help you and your cardiology peers become enablers of value-based care delivery.

Smooth, real-time collaboration with peers

Enterprise Imaging for Cardiology gives you a complete range of easy-to-use collaboration, chat and sharing functions. So you stay connected throughout your health network: with other cardiologists, sonographers and clinicians, which can help you make informed decisions.

Sharing information with referrers

With Enterprise Imaging, you can distribute all of the relevant clinical content – studies, images and reports – quickly and easily to referring physicians. Sectional reporting offers a standardized report structure that lets them quickly find what they need, increasing their satisfaction and enhancing the patient's care.

Support for research and teaching

The dedicated academic workflow drives studies and reports to residents and attending physicians, enabling peer review and feedback. And you can easily tag and flag studies for academic and research purposes. This simplifies your work as an attending physician, while enriching the learning experience for residents.



Features that drive communication and collaboration

Collaboration and education:

- Live chat, screen sharing and more keep cardiologists connected with peers and referring physicians, inside and outside of the facility.
- The advanced academic workflow supports the continuous education of the residents.
- The peer-learning workflow enables peers to analyze, rate and discuss reports, helping to improve future reports, while meeting requirements for data privacy and confidentiality.
- It's easy and efficient to organize and participate in multidisciplinary meetings, tumor boards and conferences, with schedules, rules, discussion tasks and participants all managed.

Interoperability:

- The unified Enterprise Imaging platform ensures maximum interoperability and real-time exchange of information.
- Integration of the system with the EHR enables captured data to be automatically synchronized with the EHR data.



STREAMLINED REPORTING FOR CARDIOLOGY SPECIALTIES

How does the consolidated Enterprise Imaging platform:

- Let you automate the reporting workflow, to generate, review and confirm structured clinical reports for cardiology specialties?
- Include information relevant to clinical care in the structured reporting: data from modalities and devices, measurements, advanced analysis and more?
- Help you to process interpretations in a timely way?
- Enable you to capture data as you query it, and then present it in standard formats to reduce the effort of administrative, reporting and registry-related tasks?

MEANINGFUL REPORTING, WITH LESS TIME AND EFFORT

Meaningful reports are key to confident diagnosis; but creating them can be a demanding part of the cardiology workflow. Enterprise Imaging gives you and your team the tools to create relevant reports that add value to clinical care, while reducing the time and effort required.

More time for value-creating tasks

Enterprise Imaging streamlines the reporting workflow, enabling you to produce consistent and readable reports from coded data, with a fast report turnaround.

Reporting tasks are automated whenever possible, reducing clicks and speeding up the work throughout the reporting process. So, you and your colleagues can focus your time and effort on creating value and enhancing care.

Reports that increase diagnostic confidence

Reports made using the Enterprise Imaging workflow are well-structured. Administrative and clinical information is presented in a way that makes it easy to find it for diagnosis.

Comply with data registry requirements and quality guidelines

Within the Enterprise Imaging platform, you can capture data as you query it, and then present it in standard formats for registries. Standardized reporting makes it easier to prove your compliance with quality guidelines, supporting the continuous quality improvement of the services you deliver and facilitating your accreditation. And feeding the correct data into the appropriate templates helps ensure correct reimbursements.



Features that make the difference

Streamlined reporting workflow:

- Cardiologists can produce relevant, well-organized, structured reports and referral letters 'right out of the box'.
- Enterprise Imaging supports preferred physician/sonographer workflows.
- Web access enables them to generate and distribute reports in a single session, even when 'on the move' or remotely.

Access to complete data:

- Cardiologists have access to the patient's complete cardiology file, including images and related reports from radiology, emergency department, ECG, echocardiology, vascular ultrasound, nuclear cardiology, coronary and interventional angiography.

Customized templates:

- Enterprise Imaging provides cardiologists with a system for report generation with natural language based on customized templates, including:
 - Inventory and consumables reporting (depending on regional availability);
 - Performance reporting dashboards.





Contact your Agfa HealthCare representative for more info

Agfa and the Agfa rhombus are trademarks of Agfa-Gevaert N.V., Belgium, or its affiliates. All rights reserved. The data in this publication are for illustration purposes only and do not necessarily represent standards or specifications that must be met by Agfa HealthCare. All information contained herein is intended for guidance purposes only, and characteristics of the products and services described in this publication can be changed at any time without notice. Products and services may not be available for your local area. Please contact your local sales representative for availability information. Agfa HealthCare diligently strives to provide as accurate information as possible, but shall not be responsible for any typographical error.

© 2019 Agfa NV
All rights reserved
Published by Agfa NV
Septestraat 27 - 2640 Mortsel
Belgium

202001

AGFA 
HealthCare