

What if...

you could have DR image quality*
using your CR solution?

Our CsBr (Cesium Bromide) needle-based detectors, used in our DX-M CR solution, deliver the same very high image quality and potential for X-ray dose reduction as the CsI (Cesium Iodide) needle-based detectors in our DR systems.

The result?

DR image quality
at the price of a CR system.

What are the benefits of upgrading to CsBr in your CR system?

- **When you add NIP** (needle image plates) to your CR system, it will provide the potential for X-ray dose reduction.
- **It offers greater flexibility**, extending the possibilities by allowing mixed use for digital mammography** and general radiography. And you can do a full leg/full spine in just one exposure.
- **It is robust, lightweight and convenient to use**, even for mobile applications, with easy positioning for all exams. All cassette sizes are available.
- **Your Agfa HealthCare solution includes our gold-standard MUSICA image processing.** So you have the same look and feel when combining DR and CR, for greater diagnostic confidence.

MUSICA[?]



How to keep total cost of ownership down?

- By switching to CsBr, you don't have any new equipment investments: you get DR image quality and low dose potential with your existing X-ray modalities.
- You only need one system for all your applications: digital mammography**, general radiography, full leg/full spine, neonatal and pediatrics.
- And the cost of installation, warranty and maintenance is in line with CR.

So you really can have DR image quality at the price of a CR system.

The only question is: why wait?

How are the CsBr and CsI detectors identical?

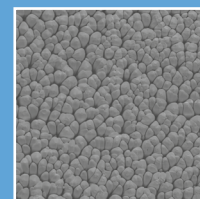
- Crystal structure
- Crystal morphology (long needles with 3-5 μm diameter)
- Intrinsic X-ray absorption: Cs (Cesium)



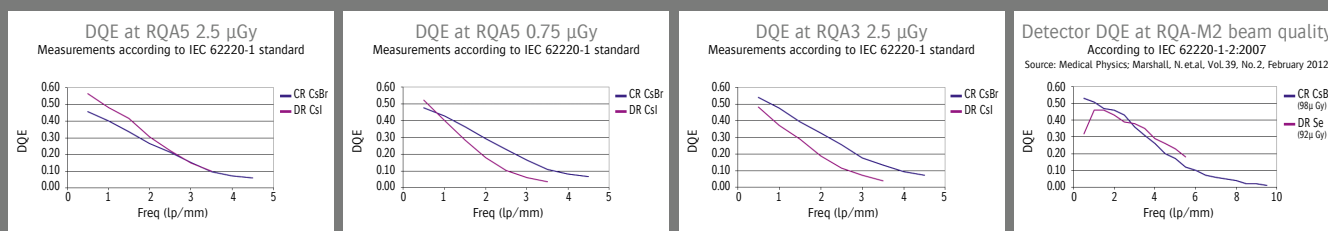
How are they different?

Small differences in chemical composition:

- Br (Bromide) storage phosphor in the CR detector
- I (Iodide) as the scintillator in the DR detector



*Statement of DR image quality is based on DQE measurements according to IEC 62220-1 standard



**Needle-based technology has obtained FDA Clearance and EUREF (European Reference Organisation for Quality Assured Breast Screening and Diagnostic Services) Certification in CR digital mammography solutions, based on equivalence with well-established technical standards and clinical tests.

More information on **Needle technology** and **Dose Reduction**:

www.agfahealthcare.com/global/en/main/products_services/dose_mgmt/index.jsp

More information on **Digital Mammography**:

www.agfahealthcare.com/global/en/main/products_services/computed_radiography/digitizers/dx_m_2.jsp

For more information, please contact your local sales representative.

www.agfahealthcare.com

Agfa, the Agfa rhombus and MUSICA are trademarks of Agfa-Gevaert N.V., Belgium, or its affiliates. All other trademarks are held by their respective owners and are used in an editorial fashion with no intention of infringement. All information contained herein is intended for guidance purposes only, and characteristics of the products and services can be changed at any time without notice. Please contact your local sales representative for availability information.