

Cleaning the image plate of CR HD5.0, CR MD4.0R, CR HM5.0 and CR MM3.0R

Cleaning the Image Plate



Warning: Be aware that the image plate of the CR HD5.x and CR HM5.x detectors is a very expensive part and therefore needs extra care!



Warning: Do not put the image plate with the phosphor side facing down!



Warning: To avoid any deformation always store the image plate horizontally on a flat surface

Topics:

- *When to clean the image plate?*
- *Permitted cleaning products?*
- *How to clean the image plate?*

When to clean the image plate?

The inner lining of the CR detectors is made of fleece. This ensures a high degree of protection against electrostatic charging and dust collection on the image plates. Nonetheless, it is recommended to clean the image plates of the CR HD5.x detectors and CR MD 4.xR plates and cassettes quarterly using the following procedure.

The CR MM3.xR image plate and the image plate of a CR HM5.x Mammo detector requires a more frequent cleaning: at least once a week or after every 200 cycles (whatever comes first).

Permitted cleaning products?

- For CR MD4.xR and CR HD5.x, only use AGFA CR Phosphor Plate Cleaner and a soft lint-free cellulose cloth or Polynit wipes to clean the plate.
- For CR MM3.xR and CR HM5.x, only use AGFA CR Phosphor Plate Cleaner and Polynit wipes to clean the plate.



Warning: The use of Agfa CR Phosphor Plate Cleaner and Polynit wipes for CR MM3.xR is restricted to image plates that have a batch number starting with the letter “C” or higher. For CR MM3.xR image plates with a batch code starting with the letter “B”, use only the dedicated mammography PROSAT wipes purchased from Agfa or an Agfa certified dealer to clean the plate.

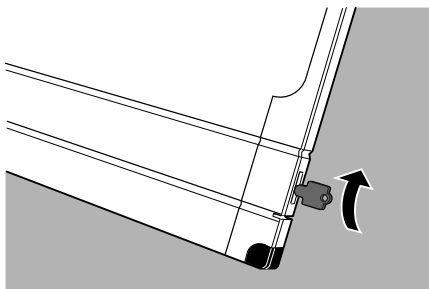


Note: In a mixed environment with old and new CR MM3.xR plates it is recommended to use only PROSAT wipes purchased from Agfa or an Agfa certified dealer to clean the plates.

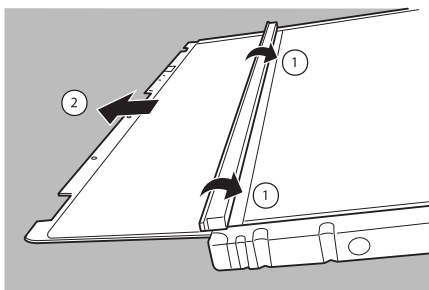
How to clean the image plate?

To clean the image plate:

1. Insert a key or a pen into the cassette lock to open the shutter.

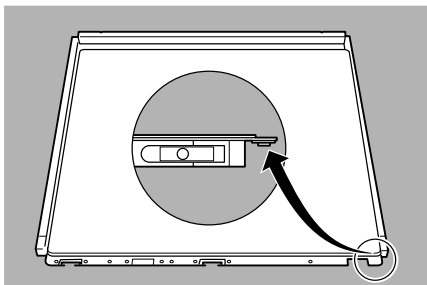


2. Remove the key or the pen.
3. Turn the cassette around, so that the black tube side is above.
4. Hold back the shutter with both thumbs and let the image plate slide out carefully onto the table.



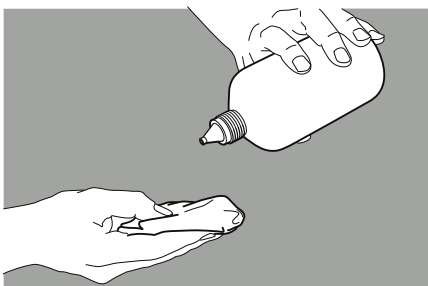
5. Put the image plate onto the black tube side of the empty cassette, as shown in the figure below.

By putting the plate on the cassette so that the hooks are hanging over the border of the cassette, a bending of the image plate is avoided.



6. Clean the image plate as follows:

- Take an appropriate wipe or moisten the cloth with cleaner and wipe the **image plate surface** softly and evenly.

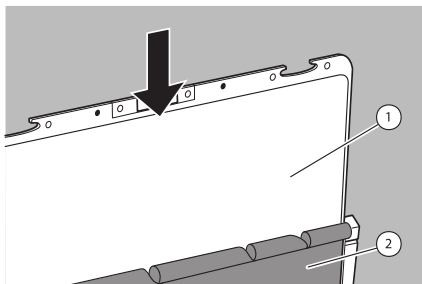


Warning: If CR Phosphor Plate Cleaner is used, do not pour it directly onto the image plate.

- Leave the **image plate surface** to dry for about 10 minutes to allow the solvents to evaporate.
- Once the image plate surface is dry (after about 10 minutes), check once again for particles of material and other impurities before placing the image plate into the cassette.

7. Put the image plate back into the cassette.

Verify that the white phosphor side is oriented to the black tube side of the cassette and that the shutter does not scratch the image plate.



1. White phosphor side
2. Black tube side of the cassette



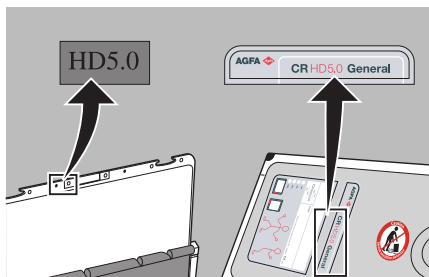
Warning: Make sure to slide in the image plate carefully. Do not let the plate fall down vertically into the cassette! This causes damages of the phosphor.

8. When the image plate is completely inside the cassette, close the shutter.

To close the shutter easily, insert a key or a pen into the cassette lock while closing the shutter. Once closed, remove the key or the pen.



Note: Make certain you put the correct image plate into the correct cassette. The label on the image plate must correspond to the label on the cassette.



Note: After cleaning it is necessary to erase the image plate before use.