



## CR 30-Xm: JOIN THE DIGITAL EVOLUTION IN MAMMOGRAPHY

mammography and general radiography  
in a tabletop solution at a very high resolution  
of 50µm pixel pitch



# COMBINING

digital mammography  
and general radiography

A compact, single-slot, table-top digitizer that handles both digital mammography and general radiography applications at a very high resolution of 50 $\mu$ m pixel pitch. One that meets the high level quality demanded for digital mammography and delivers a solution that facilitates the change from analog to digital in a fast and a cost-efficient way. That incorporates artificial intelligence with SmartRotate, which enhances productivity, allows consistent viewing independent of the cassette-orientation, and keeps the full focus on patient care. That is the CR 30-Xm from Agfa.



---

The CR 30-Xm addresses your digital mammography and general radiography needs in a single digitizer.

---

## **An easy and cost-efficient transition from analog to digital**

A mixed-use solution comprising a single plate digitizer, the CR 30-Xm\* is designed to address your digital mammography and general radiography needs in a single digitizer.

Affordable, compact and table top, with a horizontal cassette insertion that prevents dust and dirt being introduced into the system, the CR 30-Xm makes digital imaging highly accessible to smaller hospitals, small practices and facilities making the move from analog to digital.

By combining the high image quality and high throughput achieved through CR plates and cassettes, Agfa's MUSICA image processing software and workstation, and with the low total cost of ownership, the CR 30-Xm is an ideal entry to a digital world that combines digital mammography and general radiography.

## **Mixed use capabilities for digital mammography and general radiography**

Suitable for digital mammography and all general radiography – including full leg full spine studies – the CR 30-Xm's multi-application capabilities enable this single solution to deliver maximum study types. This makes it highly versatile and cost-effective.

## **High quality combined with high throughput**

By scanning the large cassette at the full width of 43 cm (17"), the CR 30-Xm combines high quality with high throughput. Add to this its support for all popular cassette formats, including mammography and

panoramic dental, and you achieve reliable, high quality image capture.

## **Very high resolution of 50µm**

Our plates & cassettes offer a very high resolution image quality and are therefore suited for general radiography applications that require detection of very small details such as extremities and rheumatology.

## **Supports a continuous digital workflow**

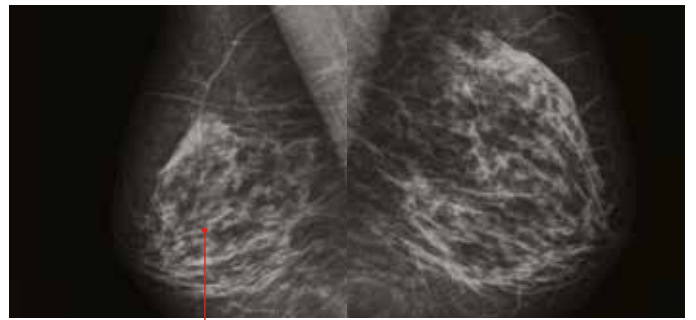
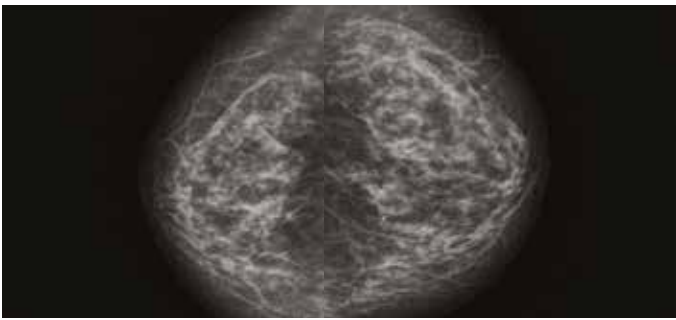
The CR 30-Xm's use of the MUSICA intuitive user-friendly interface, its heavy duty imaging rate of 60 full size (35 x 43 cm) plates per hour, and its single slot insertion, enable you to concentrate on image analysis and your patients. The fast preview facility on the examination window of the MUSICA workstation, which begins shortly after a cassette is dropped into the buffer, allows the correct positioning and exposure to be determined as the final image is being completed. This results in a continuous, optimized digital workflow.

## **Compact and mobile**

The CR 30-Xm's small table top footprint and horizontal cassette insertion make it ideal for space restricted areas. With additional fitments, it can be integrated easily as a mobile unit into vans, trucks or other mobile facilities. The CR 30-Xm also comes with the optional all-in-one cart, to keep it within easy reach, maximize the available space and facilitate transportation.



\* CR 30-Xm is not available in the US and Canada.



The CR 30-Xm delivers high resolution mammography quality imaging



Providing mammography

# QUALITY

imaging standards

## Uncompromising image quality

The high image quality needed for the detection of small and subtle lesions in the breast are achieved through the CR 30-Xm's high resolution mode of 20 pixels per mm, its dedicated CR plates and cassettes and MUSICA for Mammography image processing.

The CR 30-Xm scans at a spatial resolution of 10 pixels per mm for general radiology applications. The image is then processed using MUSICA image processing, which automatically analyzes the characteristics of each image and optimizes processing parameters – independent of user input and dose deviations. The result is minimal re- or post-processing.

## Harnessing our extensive mammography expertise

Mammography has always been at the heart of the Agfa solutions portfolio. With the CR 30-Xm, you enjoy the confidence of knowing that we are combining our extensive experience and skills in this specialist area with the same proven technologies that have already helped Agfa general radiology customers make the transition from analog to digital.

## Delivers tissue images up to the chest wall

The CR 30-Xm's dedicated mammography image plates and cassettes come in sizes of 18 cm x 24 cm and

24 cm x 30 cm\*. This enables tissue imaging right up to the chest wall.

## Total solution for digital mammography and general radiology applications

By combining the CR 30-Xm with the MUSICA workstation and MUSICA for Mammography image processing; the DRYSTAR AXYS hardcopy printer with its two online trays; and the SE Suite standalone software with its mammography option, the CR 30-Xm provides a total solution. This makes it very accessible for smaller hospitals, small practices and hospitals making the move from analog to digital.

## Artificial Intelligence for the right view, automatically

SmartRotate puts Artificial Intelligence into the hands of the technologist and radiographer during patient positioning. With SmartRotate the cassette orientation is always-right – which helps to provide more efficient, consistent and patient-centered care. Images are presented ready for viewing, directly and automatically. This 'plug and play' feature uses a Deep Neural Net to identify the image content, and then rotate it correctly. With fewer manual post-processing actions, the operator saves time and can focus on imaging - instead of adjustments. What's more, the consistent presentation of the images in the PACS enables better comparison with priors.



---

With SmartRotate, patient positioning and cassette orientation are always right, and every image is presented ready for viewing, directly and automatically. The technician and radiographer can put their full focus on patient-care, while enhancing productivity.

---

\* CR mammography imaging plates 18 cm x 24 cm and 24 cm x 30 cm are not available in the US and Canada.





The CR 30-Xm is a highly cost-effective solution that delivers low total cost of ownership.

A cost-effective

# TOTAL

solution

## **Facilitates seamless integration**

The CR 30-Xm works in conjunction with the MUSICA workstation, Agfa's image identification and quality control tool to deliver a highly efficient and optimized radiology workflow. Fully DICOM compliant, it is designed to enable you to achieve a seamlessly networked integrated digital workflow – from patient registration on the RIS to final display of softcopy or hardcopy images.

## **Enables use of existing mammography**

The CR 30-Xm's mammography-dedicated image plates and cassettes are compatible with existing mammography modalities, allowing you to continue to use your existing mammography X-ray systems while enjoying the high image quality demanded for mammography studies. With no additional costly expenditure required, your facility can move smoothly from analog to digital mammography capabilities.

## **Low total cost of ownership**

The special LED technology in the CR 30-Xm's erasure unit keeps heat output and power requirements low. This allows standard electrical outlets to be used, negating the need for preliminary electrical work, thereby keeping costs low. With its modular, component-based design, installation can be achieved in a single day and maintenance is faster, easier and more cost-effective.

## **A choice of service agreements**

Agfa offers service agreement solutions tailored to the individual customer's situation. The service agreements are available in Basic, Comfort and Advanced levels, making lifecycle costs predictable. A worldwide team of some 1000 professionals is at your service to provide support at all phases of your project. As an additional service, they can help you customize your examination tree or link RIS protocol codes, for an even higher return on investment. Furthermore, this team carries out tasks that go well beyond maintenance, including value-added services such as super user training, staff training and software upgrades.

[www.agfa.com](http://www.agfa.com)

© 2021 Agfa NV - All rights reserved - Published by Agfa NV  
Septestraat 27 - 2640 Mortsel - Belgium

Agfa, the Agfa rhombus and MUSICA are trademarks of Agfa-Gevaert NV, Belgium, or its affiliates. All rights reserved. All information contained herein is intended for guidance purposes only, and characteristics of the products and services described in this publication can be changed at any time without notice. Products and services may not be available for your local area. Please contact your local sales representative for availability information. Agfa-Gevaert NV diligently strives to provide as accurate information as possible, but shall not be responsible for any typographical error.