

> MAMORAY® HT Film



High Image Quality with High-Resolution

> Film/Screen Combinations Dedicated For Mammography

The MAMORAY HT Film

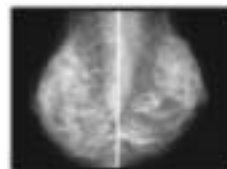
The MAMORAY HT film is a single-emulsion orthochromatic mammography film designed for either high throughput or standard processing cycles.

Agfa has designed the MAMORAY HT film using the newest Cubic Plus Crystal technology, which provides consistent quality. The blue tone of MAMORAY HT film produces more brilliant image with low noise and high resolution. The Mammography HT may be developed in shorter processing cycles such as 60s for interventional procedures.

Systems Approach

The MAMORAY HT film/screen combinations complement Agfa's Total Mammography Imaging Systems. The MAMORAY HT film/screen combination consists of the MAMORAY HT film combined with MAMORAY Detail R screens.

A single-emulsion orthochromatic mammography film



Provides excellent image quality

Cubic Plus Crystal technology



Mamoray HT film may be developed in shorter processing cycles for interventional procedures

AGFA 

| see more | do more |

MAMORAY HT System Screen Characteristics

MAMORAY HT film is green light sensitive, designed for use with a green light emitting, singlesided mammography screen.

MAMORAY HT film provides superb image quality and low patient exposure when used with the MAMORAY Detail R cassette/screen.

MAMORAY Screen Recommendations

MAMORAY screens must be cleaned only with Agfa's CURIX® screen cleaner. Please consult with an Agfa Representative for proper cleaning recommendations.

Protect MAMORAY cassette/screens from exposure to humidities higher than 60%. Protect the screens from sunlight or ultraviolet rays which may cause discoloration or warping.

Film/Screen Speed Classifications

Film	Screen	Processing	Relative Speed
MAMORAY HT	Detail R	HT or RP	130

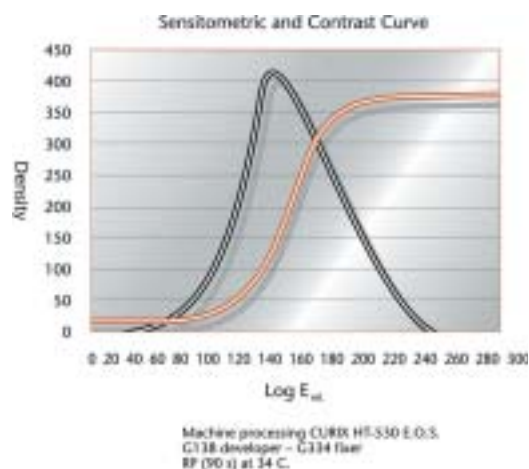
Specifications and characteristics are subject to change without notice

MAMORAY HT Film Recommendations

Processing Recommendation	Develop the film in standard (RP) processing cycle.
Chemistry	Agfa Mammography Chemistry is strongly recommended. Equivalent mammography chemistries may be used. Developer temperature should be maintained between 33° C – 35° C.
Darkroom Safelight Recommendation	Use a safelight filter appropriate for Orthochromatic film such as a GBX-2. Use a 7.5w frosted bulb placed at least 4 feet from the work surface.
Film Storage Recommendation	Relative humidity must be between 30-50%. Temperature: 4° - 25° C/39° – 77° F. Shield film from sources of heat and all penetrating radiation. Observe expiration dates.

MAMORAY HT System Benefits

- High resolution, low noise, and low patient dose
- Multiple options for film processing cycles
- Consistent image quality in every mammographic procedure
- Brilliant blue image tone for reduced eye fatigue



For the latest information on product specifications and features, visit our website at:
www.agfa.com/healthcare/us

Agfa Corporation
HealthCare Headquarters
10 South Academy Street, Greenville, SC 29601
Tel: 1-864-421-1600 • Fax: 864-421-1622

Canada
Agfa, Inc.
77 Belfield Road, Etobicoke, Ont., M9W 1G6
Tel: 416-240-7315 • Fax: 416-241-5409

Mexico
Agfa de México, S.A. de C.V.
Benjamin Franklin #98, Colonia Escandon, C.P. 11800, México, D.F.
Tel: +52 (55) 5276 7611 • Telefax: +52 (55) 5515 8719

AGFA

| see more | do more |