

# :AperTune



## ***Automatic, Intelligent Aerial Image Processing***

Today's challenge is to automate the processing and optimisation of aerial images.

:AperTune meets that challenge, allowing batches of images to be optimised quickly, automatically and consistently, all designed to save you time and effort.

It is an open system which can be used for any aerial images, and in addition is especially optimised to produce the full potential results from Agfa film.

# :AperTune

## Automatic conversion and enhancement of aerial images.

:AperTune software converts and enhances digital imagery coming from various sources of remote sensing devices, including scans of analogue films. It is used in cartographic applications and runs ahead of the mosaicing stage of the orthophoto generation. It will ease the generation of orthophoto and will save considerable effort and reduce cost.

Conversions and enhancements are performed totally automatically, and can be run in unattended operation. The user defines the output settings, and :AperTune takes over from there. Any number of different settings can be stored, and automatically applied. This software can also convert scanned images from colour and black/white aerial films to high quality positive images taking into account variances introduced by film and chemistry specifics. Overexposed images or back-lit images are converted to regular imagery.

:AperTune automatically enhances the image quality to a set level of dodging, saturation, sharpness, and radiometry. It provides noise and grain reduction or even scratch and dust removal. These can be performed on a frame by frame analysis or in batch mode.

:AperTune allows for better visibility of image details and enhances images taken in less than optimum weather conditions. Together with high speed aerial films it allows survey companies to fly missions when others are grounded.

There is even an interactive edit facility which allows operators to make final corrections they may wish to apply.

Taken together, :AperTune is a great cost-saving and time-saving investment.

## Stay Ahead. With Agfa.

Argentina (Paraguay and Uruguay),  
Tel.: +54 11 4958 5767  
Australia, Tel.: +61 3 9279 6300  
Austria, Tel.: +43 1 89112 3290  
Belgium, Tel.: +32 3 450 9866  
Belgium Direct Export, Tel.: +32 3 444 7120  
Brasil, Tel.: +55 11 5188 6444  
Canada, Tel.: +1 416 241 1110 4053  
or 877 753 2431 toll free

Caribbean and Central America,  
Tel.: +305 2135311  
Chile (Bolivia, Peru), Tel.: +56 2 360 7600  
China, Hong Kong, Tel.: +852 2555 9421  
Colombia (Ecuador), Tel.: +57 1 425 2790  
Czech Republic, Tel.: +420 2 6610 1623  
Denmark, Tel.: +45 4326 6766  
Finland, Tel.: +358 9 8878 319  
France, Tel.: +33 1 4732 6905

Germany, Tel.: +49 221 5717 0  
Greece, Tel.: +30 1 570 6500  
Hungary, Tel.: +36 1 212 1540  
Ireland, Tel.: +352 1 4097032  
Italy, Tel.: +39 02 3074 220  
Japan, Tel.: +81 3 5704 3140  
Korea, Tel.: +82 2 2262 4200  
Luxembourg, Tel.: +352 442 0441  
Malaysia, Tel.: +603-7953 5800

Mexico, Tel.: +52 55 52 767600  
Netherlands, Tel.: +31 70 413 1211  
New Zealand, Tel.: +64 9 443 5500  
Norway, Tel.: +47 67 06 88 00  
Poland, Tel.: +48 22 3 111 940  
Portugal, Tel.: +351 21 414 6700  
Singapore, Tel.: +65 6214 0110  
South Africa, Tel.: +27 11 921 5911  
Spain, Tel.: +34 93 476 7600

Sweden, Tel.: +46 8 793 0100  
Switzerland, Tel.: +41 1 823 7111  
Taiwan, Tel.: +886 2 2516 8899  
UK, Tel.: +44 20 8231 4929  
USA, Tel.: 800 227 2780 toll free  
Venezuela, Tel.: +58 2 12 263 6344

Subject to changes without prior notice.

AGFA, the Agfa-Rhombus and :AperTune are trademarks of Agfa-Gevaert, Belgium and Germany.

© 2004 Agfa-Gevaert N.V., B-2640 Mortsel-Belgium.

NGAJ1 GB 00200406

## Exceptional Quality. Unsurpassed Productivity.

### Intelligent Analysis...

:AperTune analyses spatial quality and geometry, as well as tonal characteristics and colour values. It uses frequency data to identify areas of significant content concentration. In this way, the software can take account of where the image already looks sharp to prevent excessive sharpening.

### Intelligent optimisation...

Next, :AperTune combines the colour, tonal and spatial data to calculate the adjustments needed for optimal image reproduction.

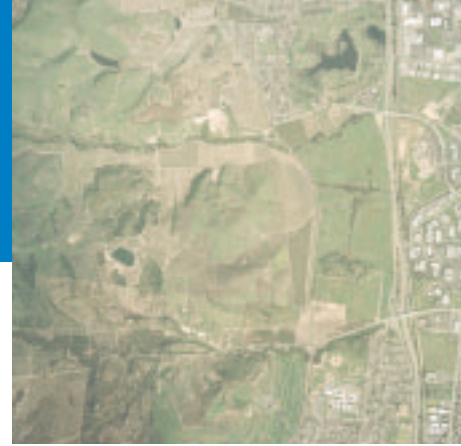
The integrity of the original image is never sacrificed. If for example, the image requires a boost in colour saturation, the shadow and highlight detail can be set to remain unaltered.

### Intelligent productivity...

:AperTune gives you automated intelligence. That means you get all the benefits of an individual image processing at a speed that surpasses any batch-processing program on the market. There's no need to pre-sort, predefine or pre-batch. :AperTune does all the thinking for you.

### Intelligent Interfacing...

:AperTune easily interfaces to networks consisting of different types of computer platforms and operating systems. It has a standard interface where third-party applications can send XML commands to perform actions such as cropping, rotation, resizing and running custom scripts automatically.



Original image.



Image after Variable Frequency Dodging.



Image after Variable Frequency Dodging and tonal correction.

<http://aerial.agfa.com>

**AGFA** 

| see more | do more